

LEA Name : Freedom Area SD  
Address : 1702 School Street  
Freedom , PA 15042

County : Beaver  
AUN Number : 127042853  
LEA Type : SD

## Annual Financial Report Accuracy Certification Statement

For Fiscal Year Ending  
**6/30/2020**

Pennsylvania Department of Education  
&  
Office of Comptroller Operations

PDE-2056: Intermediate Unit

PDE-2057: School District, AVTS/CTC, Charter School,  
and Special Program Jointure

**CERTIFICATION: By signing this page I agree that the electronic data submitted is a complete and accurate statement of the financial operations and status of the local education agency for the fiscal year. It has been prepared in accordance with generally accepted accounting principles and established Commonwealth of PA reporting guidelines.**

  
\_\_\_\_\_  
Chief School Administrator Signature

12/10/2020  
\_\_\_\_\_  
Date

  
\_\_\_\_\_  
Board Secretary Signature

12-11-2020  
\_\_\_\_\_  
Date

William M McNamee  
\_\_\_\_\_  
Contact Person

(724)775-7644      Ext :130  
\_\_\_\_\_  
Contact Person Telephone Number

wmcnamee@freedomarea.org  
\_\_\_\_\_  
Contact Person E-mail Address

(724)775-7434  
\_\_\_\_\_  
Contact Person Fax Number

**Audit Certification**  
**Annual Financial Report:**  
For Fiscal Year Ending **6/30/2020**  
**(Pursuant to PA School Code Section 218(b))**

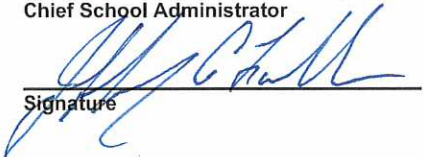
LEA Name : Freedom Area SD  
AUN Number : 127042853  
County : Beaver

<b>Audit Certification Due:</b> 12/31/2020
---

**This certification is applicable to the Annual Financial Report data submitted through the Consolidated Financial Reporting System (CFRS).**

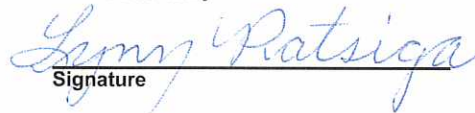
CERTIFICATION: By signing this page I agree that the financial statements of the school have been properly audited as noted above pursuant to Article XXIV, and in the auditor's professional opinion, the Annual Financial Report (PDE-2057) submitted through CFRS is materially consistent with the audited financial statements.

Chief School Administrator

  
Signature

12/10/2020  
Date

Board Secretary

  
Signature

12.11.2020  
Date

William M McNamee

\_\_\_\_\_  
Contact Person

wmnamee@freedomarea.org

\_\_\_\_\_  
Contact Person E-mail Address

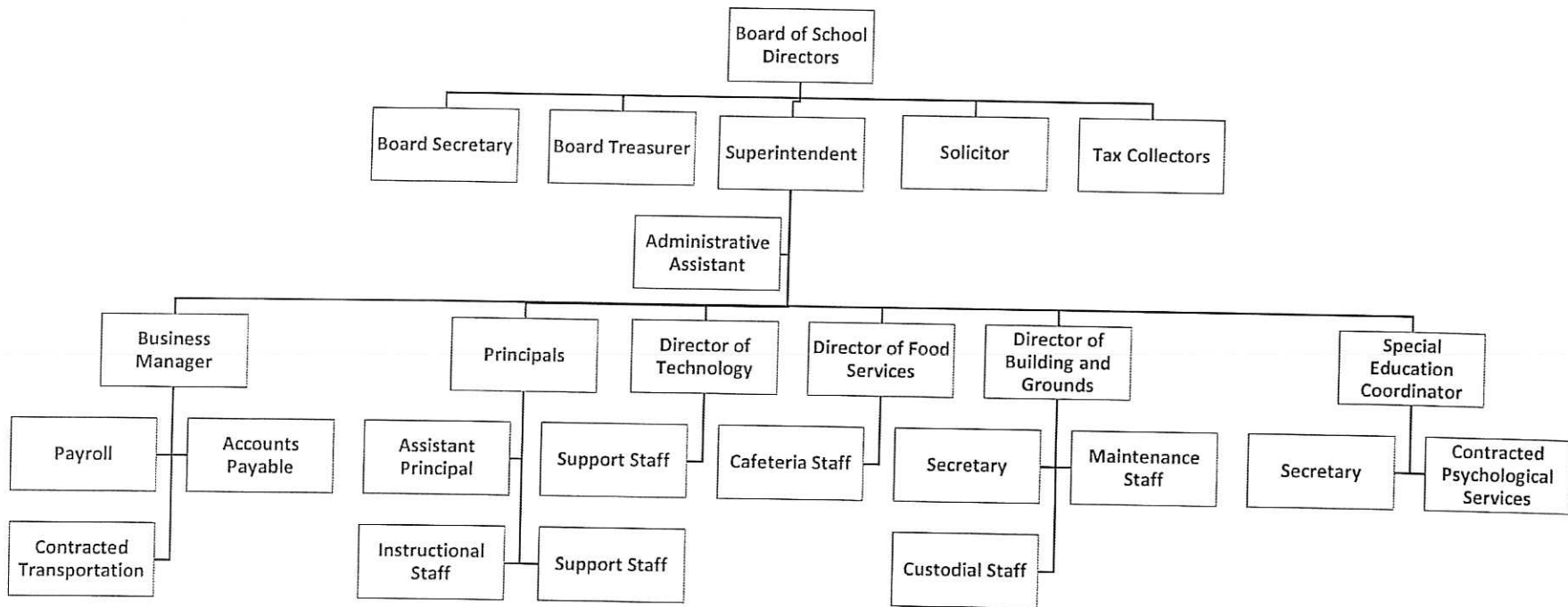
(724)775-7644

Ext :130

\_\_\_\_\_  
Contact Person Telephone Number

(724)775-7434

\_\_\_\_\_  
Contact Person Fax Number



Book	Policy Manual
Section	600 Finances
Title	GASB Statement 34
Code	622
Status	Active
Adopted	April 5, 2001
Last Revised	September 9, 2003

**Purpose**

The Board of School Directors recognizes the need to implement the required accounting and financial reporting standards promulgated by the Governmental Accounting Standards Board (GASB). GASB Statement 34 was issued to provide new and additional information to the diverse users of district financial statements. In addition to the information contained in previous financial reporting, GASB 34 will now provide information in a highly aggregated manner looking at the long-term financial health of the school district. This new information will require school districts to account for capital assets in a manner different than previously recorded. The intent is to provide an additional set of entity-wide financial statements more similar to the private sector.

The primary objectives of GASB 34 include:

1. New entity-wide financial statements reflecting the overall financial position of the district.
2. Long-term focus for school district activities.
3. Narrative overview and analysis.
4. Information on major funds.
5. Expanded budgetary reporting.

It is important to note that the methods, calculations and procedures for determining the budgetary process of the school district will not be affected by the implementation of the new standards. The information contained in previous financial statements will largely be in the same format.

**Authority**

Governmental Accounting Standards Board Statement 34.

**Delegation of Responsibility**

The Board of School Directors delegates to the Business Manager, in cooperation with the local independent auditor, the responsibility to coordinate the compilation and preparation of all information necessary to implement this policy in accordance with district administrative procedures.

**Guidelines**

**Requirements**

Capitalized Assets -



A capitalized asset shall be any asset acquired by donation or purchase that has a useful life of longer than one (1) year or extends the life of another capitalized asset or increases its value and meets a specific dollar threshold. At management's discretion, and in conjunction with the local auditor, capital assets purchased with long-term debt may be capitalized regardless of the specific dollar threshold for the type of class of asset acquired.

#### Value of Assets -

All capitalized assets shall be recorded at historical cost at acquisition date or estimated cost if acquired prior to the date of the initial inventory. Any donated capital asset shall be recorded at the date of donation using the fair market value of the item at that date.

#### Depreciation -

Depreciation shall be based on the straight-line method of depreciation over the estimated useful life of each depreciable asset or group of assets. Periodically, management shall evaluate the estimated useful life of each depreciable asset to determine if revision of such estimate is required.

#### Dollar Threshold -

A dollar threshold for each asset shall be set at an appropriate level. Management should periodically review these levels with assistance from the local independent auditor and make any modifications necessary.

<u>Val Number</u>	<u>Description</u>	<u>Justification</u>
41050	There is an entry in function 5110- 990 object "Other". Please explain what constitutes "Other".  Expenditure 5110-990, Fund 10: \$2,000.00	Payment for paying agent fees
50440	SESS - 2260 Instruction and Curriculum Development Services: SESS Schedule amounts for Special Education vary from prior year by 40% or more. Correct the data or enter a justification.  SESS Schedule 2260: \$33.61 Prior Year SESS Schedule 2260: \$137,153.44	Due to COVID-19 Pandemic the staff development was curtailed

Amounts Expressed in Whole Dollars	<u>General Fund</u> (10)	<u>Student Sponsored</u> <u>Activity Fund</u> (21)	<u>Public Purpose Trust</u> (27)	<u>Other Compt Approved</u> (28)	<u>Athletic / Activity</u> (29)
<b>Assets And Deferred Outflows Of Resources</b>					
<b>Assets</b>					
0100 Cash and Cash Equivalents	8,121,848				
0110 Investments					
0120 Taxes Receivable	1,379,890				
0130 Due From Other Funds	43,906				
0141 Due From Other Governments	28,673				
0142 State Revenue Receivable	984,320				
0143 Federal Revenue Receivable	170,298				
0145 Other Intergovernmental Revenue Receivable	9,676				
0146 Due from Primary Government					
0147 Due from Component Unit					
0150 Other Receivables	21,247				
0170 Inventories					
0180 Prepaid Expenses (Expenditures)	237,273				
0190 Other Current Assets					
<b>Total Assets</b>	<b>\$10,997,131</b>				
0910 Deferred Outflows of Resources					
<b>Total Assets And Deferred Outflows Of Resources</b>	<b>\$10,997,131</b>				

Amounts Expressed in Whole Dollars	<u>Capital Reserve (690,</u>	<u>Capital Reserve (1431)</u>	<u>Other Capital Projects</u>	<u>Debt Service</u>	<u>Permanent</u>
	<u>1850)</u>	<u>(32)</u>	<u>Fund</u>	<u>(40)</u>	<u>(90)</u>
	<u>(31)</u>		<u>(39)</u>		
<b>Assets And Deferred Outflows Of Resources</b>					
<b>Assets</b>					
0100 Cash and Cash Equivalents			224,512		
0110 Investments			2,625,465		
0120 Taxes Receivable					
0130 Due From Other Funds			525,500		
0141 Due From Other Governments			306,000		
0142 State Revenue Receivable					
0143 Federal Revenue Receivable					
0145 Other Intergovernmental Revenue Receivable					
0146 Due from Primary Government					
0147 Due from Component Unit					
0150 Other Receivables					
0170 Inventories					
0180 Prepaid Expenses (Expenditures)					
0190 Other Current Assets					
<b>Total Assets</b>			<b>\$3,681,477</b>		
0910 Deferred Outflows of Resources					
<b>Total Assets And Deferred Outflows Of Resources</b>			<b>\$3,681,477</b>		

Amounts Expressed in Whole Dollars

**Total Governmental Funds**

**Assets And Deferred Outflows Of Resources**

**Assets**

0100 Cash and Cash Equivalents	8,346,360
0110 Investments	2,625,465
0120 Taxes Receivable	1,379,890
0130 Due From Other Funds	569,406
0141 Due From Other Governments	334,673
0142 State Revenue Receivable	984,320
0143 Federal Revenue Receivable	170,298
0145 Other Intergovernmental Revenue Receivable	9,676
0146 Due from Primary Government	
0147 Due from Component Unit	
0150 Other Receivables	21,247
0170 Inventories	
0180 Prepaid Expenses (Expenditures)	237,273
0190 Other Current Assets	

**Total Assets** **\$14,678,608**

0910 Deferred Outflows of Resources

**Total Assets And Deferred Outflows Of Resources** **\$14,678,608**

Amounts Expressed in Whole Dollars	<u>General Fund</u> (10)	<u>Student Sponsored</u> <u>Activity Fund</u> (21)	<u>Public Purpose Trust</u> (27)	<u>Other Compt Approved</u> (28)	<u>Athletic / Activity</u> (29)
<b>Liabilities And Deferred Inflows Of Resources And Fund Balances</b>					
<b>Liabilities</b>					
0400 Due to Other Funds	525,500				
0411 Due to Other Governments					
0412 Due to Primary Government					
0413 Due to Component Unit					
0420 Accounts Payable	1,059,446				
0430 Contracts Payable					
0440 Current Portion of Long-Term Debt					
0450 Short-Term Payables					
0461 Accrued Salaries and Benefits	1,977				
0462 Payroll Deductions and Withholding	1,523,175				
0480 Unearned Revenues	1,032,222				
0490 Other Current Liabilities	6,244				
<b>Total Liabilities</b>	<b>\$4,148,564</b>				
0950 Deferred Inflows of Resources					
<b>Fund Balances</b>					
0810 Nonspendable Fund Balance	237,373				
0820 Restricted Fund Balance					
0830 Committed Fund Balance	4,739,975				
0840 Assigned Fund Balance					
0850 Unassigned Fund Balance	1,871,219				
<b>Total Fund Balances</b>	<b>\$6,848,567</b>				
<b>Total Liabilities, Deferred Inflows Of Resources And Fund Balances</b>	<b>\$10,997,131</b>				

Amounts Expressed in Whole Dollars	<u>Capital Reserve (690,</u> <u>1850)</u> <u>(31)</u>	<u>Capital Reserve (1431)</u> <u>(32)</u>	<u>Other Capital Projects</u> <u>Fund</u> <u>(39)</u>	<u>Debt Service</u> <u>(40)</u>	<u>Permanent</u> <u>(90)</u>
<b>Liabilities And Deferred Inflows Of Resources And Fund Balances</b>					
<b>Liabilities</b>					
0400 Due to Other Funds					
0411 Due to Other Governments					
0412 Due to Primary Government					
0413 Due to Component Unit					
0420 Accounts Payable			89,562		
0430 Contracts Payable			66,815		
0440 Current Portion of Long-Term Debt					
0450 Short-Term Payables					
0461 Accrued Salaries and Benefits					
0462 Payroll Deductions and Withholding					
0480 Unearned Revenues			331,500		
0490 Other Current Liabilities					
<b>Total Liabilities</b>			<b>\$487,877</b>		
0950 Deferred Inflows of Resources					
<b>Fund Balances</b>					
0810 Nonspendable Fund Balance					
0820 Restricted Fund Balance					
0830 Committed Fund Balance			3,193,600		
0840 Assigned Fund Balance					
0850 Unassigned Fund Balance					
<b>Total Fund Balances</b>			<b>\$3,193,600</b>		
<b>Total Liabilities, Deferred Inflows Of Resources And Fund Balances</b>			<b>\$3,681,477</b>		



Amounts Expressed in Whole Dollars

**Total Governmental Funds**

**Liabilities And Deferred Inflows Of Resources And Fund Balances**

**Liabilities**

0400 Due to Other Funds	525,500
0411 Due to Other Governments	
0412 Due to Primary Government	
0413 Due to Component Unit	
0420 Accounts Payable	1,149,008
0430 Contracts Payable	66,815
0440 Current Portion of Long-Term Debt	
0450 Short-Term Payables	
0461 Accrued Salaries and Benefits	1,977
0462 Payroll Deductions and Withholding	1,523,175
0480 Unearned Revenues	1,363,722
0490 Other Current Liabilities	6,244

**Total Liabilities** **\$4,636,441**

0950 Deferred Inflows of Resources

**Fund Balances**

0810 Nonspendable Fund Balance	237,373
0820 Restricted Fund Balance	
0830 Committed Fund Balance	7,933,575
0840 Assigned Fund Balance	
0850 Unassigned Fund Balance	1,871,219

**Total Fund Balances** **\$10,042,167**

**Total Liabilities, Deferred Inflows Of Resources And Fund Balances** **\$14,678,608**

Amounts Expressed in Whole Dollars	<u>General Fund</u> (10)	<u>Student Sponsored</u> <u>Activity Fund</u> (21)	<u>Public Purpose Trust</u> (27)	<u>Other Compt Approved</u> (28)	<u>Athletic / Activity</u> (29)
<b>Revenues</b>					
6000 Revenue from Local Sources	10,079,838				
7000 Revenue from State Sources	12,880,098				
8000 Revenue from Federal Sources	416,968				
<b>Total Revenues</b>	<b>\$23,376,904</b>				
<b>Expenditures</b>					
1000 Instruction	14,234,432				
2000 Support Services	6,750,763				
3000 Operation of Non-Instructional Services	572,643				
4000 Facilities Acquisition, Construction and Improvement Services	68,414				
5110 Debt Service	732,460				
5130 Refund of Prior Year Revenues / Receipts					
<b>Total Expenditures</b>	<b>\$22,358,712</b>				
<b>Excess (Deficiency) Of Revenues Over Expenditures</b>	<b>\$1,018,192</b>				
<b>Other Financing Sources (Uses)</b>					
9110 Face Value of Bonds Issued					
9120 Proceeds from Refunding of Bonds					
9130 Bond Premiums					
9200 Proceeds from Extended-Term Financing					
9300 Interfund Transfers - IN					
9400 Sale of or Compensation for Loss of Fixed Assets	14,754				
9710 Transfers from Component Units					
9720 Transfers from Primary Governments					
9910 Other Financing Sources Not Listed in the 9000 Series					
9990 Insurance Recoveries					
5120 Debt Service – Refunded Bonds					
5150 Bond Discounts					
5200 Interfund Transfers – Out	500,000				
5300 Transfers Out to Component Units/Primary Governments					
<b>Total Other Financing Sources (Uses)</b>	<b>(\$485,246)</b>				

Amounts Expressed in Whole Dollars	<u>Capital Reserve (690, 1850) (31)</u>	<u>Capital Reserve (1431) (32)</u>	<u>Other Capital Projects Fund (39)</u>	<u>Debt Service (40)</u>	<u>Permanent (90)</u>
<b>Revenues</b>					
6000 Revenue from Local Sources			35,226		
7000 Revenue from State Sources					
8000 Revenue from Federal Sources					
<b>Total Revenues</b>			<b>\$35,226</b>		
<b>Expenditures</b>					
1000 Instruction					
2000 Support Services					
3000 Operation of Non-Instructional Services					
4000 Facilities Acquisition, Construction and Improvement Services			182,005		
5110 Debt Service					
5130 Refund of Prior Year Revenues / Receipts					
<b>Total Expenditures</b>			<b>\$182,005</b>		
<b>Excess (Deficiency) Of Revenues Over Expenditures</b>			<b>(\$146,779)</b>		
<b>Other Financing Sources (Uses)</b>					
9110 Face Value of Bonds Issued					
9120 Proceeds from Refunding of Bonds					
9130 Bond Premiums					
9200 Proceeds from Extended-Term Financing					
9300 Interfund Transfers - IN			500,000		
9400 Sale of or Compensation for Loss of Fixed Assets			25,500		
9710 Transfers from Component Units					
9720 Transfers from Primary Governments					
9910 Other Financing Sources Not Listed in the 9000 Series					
9990 Insurance Recoveries					
5120 Debt Service – Refunded Bonds					
5150 Bond Discounts					
5200 Interfund Transfers – Out					
5300 Transfers Out to Component Units/Primary Governments					
<b>Total Other Financing Sources (Uses)</b>			<b>\$525,500</b>		

Amounts Expressed in Whole Dollars	<u>Total Governmental Funds</u>
<b>Revenues</b>	
6000 Revenue from Local Sources	10,115,064
7000 Revenue from State Sources	12,880,098
8000 Revenue from Federal Sources	416,968
<b>Total Revenues</b>	<b>\$23,412,130</b>
<b>Expenditures</b>	
1000 Instruction	14,234,432
2000 Support Services	6,750,763
3000 Operation of Non-Instructional Services	572,643
4000 Facilities Acquisition, Construction and Improvement Services	250,419
5110 Debt Service	732,460
5130 Refund of Prior Year Revenues / Receipts	
<b>Total Expenditures</b>	<b>\$22,540,717</b>
<b>Excess (Deficiency) Of Revenues Over Expenditures</b>	<b>\$871,413</b>
<b>Other Financing Sources (Uses)</b>	
9110 Face Value of Bonds Issued	
9120 Proceeds from Refunding of Bonds	
9130 Bond Premiums	
9200 Proceeds from Extended-Term Financing	
9300 Interfund Transfers - IN	500,000
9400 Sale of or Compensation for Loss of Fixed Assets	40,254
9710 Transfers from Component Units	
9720 Transfers from Primary Governments	
9910 Other Financing Sources Not Listed in the 9000 Series	
9990 Insurance Recoveries	
5120 Debt Service – Refunded Bonds	
5150 Bond Discounts	
5200 Interfund Transfers – Out	500,000
5300 Transfers Out to Component Units/Primary Governments	
<b>Total Other Financing Sources (Uses)</b>	<b>\$40,254</b>

Amounts Expressed in Whole Dollars

	<u>General Fund</u> (10)	<u>Student Sponsored</u> <u>Activity Fund</u> (21)	<u>Public Purpose Trust</u> (27)	<u>Other Compt Approved</u> (28)	<u>Athletic / Activity</u> (29)
<b>Special And Extraordinary Items</b>					
9920 Special Items – Gains					
9930 Extraordinary Items – Gains					
5520 Special Items – Losses					
5530 Extraordinary Items – Losses					
<b>Net Change In Fund Balances</b>	<b>\$532,946</b>				
<b>Fund Balance</b>					
0001 Fund Balance - Beginning of Fiscal Year		6,315,620			
<b>Fund Balance - End Of Year</b>		<b>\$6,848,566</b>			

Amounts Expressed in Whole Dollars	<u>Capital Reserve (690)</u>	<u>Capital Reserve (1431)</u>	<u>Other Capital Projects</u>	<u>Debt Service</u>	<u>Permanent</u>
	<u>1850</u>	<u>(32)</u>	<u>Fund</u>	<u>(40)</u>	<u>(90)</u>
	<u>(31)</u>		<u>(39)</u>		
<b>Special And Extraordinary Items</b>					
9920 Special Items – Gains					
9930 Extraordinary Items – Gains					
5520 Special Items – Losses					
5530 Extraordinary Items – Losses					
<b>Net Change In Fund Balances</b>			<b>\$378,721</b>		
<b>Fund Balance</b>					
0001 Fund Balance - Beginning of Fiscal Year			2,814,878		
<b>Fund Balance - End Of Year</b>			<b>\$3,193,599</b>		

Amounts Expressed in Whole Dollars

**Total Governmental Funds**

**Special And Extraordinary Items**

- 9920 Special Items – Gains
- 9930 Extraordinary Items – Gains
- 5520 Special Items – Losses
- 5530 Extraordinary Items – Losses

**Net Change In Fund Balances** **\$911,667**

**Fund Balance**

0001 Fund Balance - Beginning of Fiscal Year 9,130,498

**Fund Balance - End Of Year** **\$10,042,165**



Amounts Expressed in Whole Dollars	<u>Food Service</u> (51)	<u>Child Care</u> <u>Operations</u> (52)	<u>Other Enterprise</u> (58)	<u>TOTAL</u>	<u>Internal Service</u> (60)
<b>Assets And Deferred Outflows Of Resources</b>					
<b>Current Assets</b>					
0100 Cash and Cash Equivalents	345,232			345,232	
0110 Investments					
0130 Due From Other Funds					
0141 Due From Other Governments					
0142 State Revenue Receivable	438			438	
0143 Federal Revenue Receivable	11,297			11,297	
0146 Due from Primary Government					
0147 Due from Component Unit					
0150 Other Receivables	27,912			27,912	
0170 Inventories	45,675			45,675	
0180 Prepaid Expenses (Expenditures)	400			400	
0190 Other Current Assets					
<b>Total Current Assets</b>	<b>\$430,954</b>			<b>\$430,954</b>	
<b>Noncurrent Assets</b>					
0211 Land					
0212 Site Improvements (Net)					
0220 Buildings and Building Improvements (Net)					
0230 Machinery, Equipment and Furniture (Net)	90,415			90,415	
0250 Construction in Progress					
0260 Long Term Prepayments					
0290 Other Noncurrent Assets					
<b>Total Noncurrent Assets</b>	<b>\$90,415</b>			<b>\$90,415</b>	
0910 Deferred Outflows of Resources	126,854			126,854	
<b>Total Assets And Deferred Outflows Of Resources</b>	<b>\$648,223</b>			<b>\$648,223</b>	

Amounts Expressed in Whole Dollars	<u>Food Service</u> (51)	<u>Child Care</u> <u>Operations</u> (52)	<u>Other Enterprise</u> (58)	<u>TOTAL</u>	<u>Internal Service</u> (60)
<b>Liabilities And Deferred Inflows Of Resources And Net Position</b>					
<b>Current Liabilities</b>					
0400 Due to Other Funds	53,904			53,904	
0411 Due to Other Governments					
0413 Due to Component Unit					
0420 Accounts Payable	3,781			3,781	
0430 Contracts Payable					
0440 Current Portion of Long-Term Debt	26,463			26,463	
0450 Short-Term Payables					
0461 Accrued Salaries and Benefits					
0462 Payroll Deductions and Withholding					
0480 Unearned Revenues	22,576			22,576	
0490 Other Current Liabilities	15,420			15,420	
<b>Total Current Liabilities</b>	<b>\$122,144</b>			<b>\$122,144</b>	
<b>Noncurrent Liabilities</b>					
0510 Bonds Payable					
0520 Extended-Term Financing Agreements Payable					
0530 Lease-Purchase Obligations					
0540 Accumulated Compensated Absences					
0550 Authority Lease Obligations					
0560 Other Post-Employment Benefits (OPEB)	41,933			41,933	
0570 Net Pension Liability	922,184			922,184	
0599 Other Noncurrent Liabilities					
<b>Total Noncurrent Liabilities</b>	<b>\$964,117</b>			<b>\$964,117</b>	
<b>Total Liabilities</b>	<b>\$1,086,261</b>			<b>\$1,086,261</b>	
0950 Deferred Inflows of Resources	48,273			48,273	
<b>Net Position</b>					
0791 Net Investment in Capital Assets	90,415			90,415	
0008 Restricted Net Position (0792 – 0798)					
0799 Unrestricted Net Position	(576,726)			(576,726)	
<b>Total Net Position</b>	<b>(\$486,311)</b>			<b>(\$486,311)</b>	
<b>Total Liabilities And Deferred Inflows Of Resources And Net Position</b>	<b>\$648,223</b>			<b>\$648,223</b>	

Amounts Expressed in Whole Dollars	<u>Food Service</u> <u>(51)</u>	<u>Child Care Operations</u> <u>(52)</u>	<u>Other Enterprise</u> <u>(58)</u>	<u>TOTAL</u>	<u>Internal Service</u> <u>(60)</u>
<b>Operating Revenues</b>					
6600 Food Service Revenue	195,773			195,773	
0071 Charges for Services					
0072 Other Operating Revenue					
<b>Total Operating Revenues</b>	<b>\$195,773</b>			<b>\$195,773</b>	
<b>Operating Expenses</b>					
100 Personnel Services – Salaries	274,058			274,058	
200 Personnel Services – Employee Benefits	184,000			184,000	
300 Purchased Professional and Technical Services	12,411			12,411	
400 Purchased Property Services					
500 Other Purchased Services	1,291			1,291	
600 Supplies	324,099			324,099	
740 Depreciation	36,390			36,390	
810 Dues and Fees	220			220	
890 Miscellaneous Expenditures					
<b>Total Operating Expenses</b>	<b>\$832,469</b>			<b>\$832,469</b>	
<b>Operating Income (Loss)</b>	<b>(\$636,696)</b>			<b>(\$636,696)</b>	
<b>Non Operating Revenues (Expenses)</b>					
6500 Earnings on Investments	2,151			2,151	
6920 Contributions and Donations from Private Sources	10,828			10,828	
6930 Gains or Losses on Sale of Fixed Assets					
6991 Refunds of a Prior Year Expenditure					
7000 Revenue from State Sources	85,579			85,579	
8000 Revenue from Federal Sources	462,964			462,964	
9990 Insurance Recoveries					
820 Claims and Judgments Against the LEA					
830 Interest					
<b>TOTAL Non Operating Revenues (Expenses)</b>	<b>\$561,522</b>			<b>\$561,522</b>	
<b>Income (Loss) Before Contributions And Transfers</b>	<b>(\$75,174)</b>			<b>(\$75,174)</b>	

Amounts Expressed in Whole Dollars	<u>Food Service</u> (51)	<u>Child Care Operations</u> (52)	<u>Other Enterprise</u> (58)	<u>TOTAL</u>	<u>Internal Service</u> (60)
<b>Contributions, Transfers, and Special and Extraordinary Items</b>					
5200 Interfund Transfers – Out					
5300 Transfers Out to Component Units/Primary Governments					
5520 Special Items – Losses					
5530 Extraordinary Items – Losses					
9300 Interfund Transfers - IN					
9500 Capital Contributions					
9700 Transfers IN From Component Units/Primary Governments					
9920 Special Items – Gains					
9930 Extraordinary Items – Gains					
<b>Change In Net Position</b>	<b>(\$75,174)</b>			<b>(\$75,174)</b>	
0002 Net Position - Beginning of Fiscal Year	(411,138)			(411,138)	
0003 Accounting Changes / Residual Equity Transfers					
<b>Net Position - End Of Year</b>	<b>(\$486,312)</b>			<b>(\$486,312)</b>	

Amounts Expressed in Whole Dollars	<u>Food Service</u> (51)	<u>Child Care Operations</u> (52)	<u>Other Enterprise</u> (58)	<u>TOTAL</u>	<u>Internal Service(60)</u>
<b>Cash Flows From Operating Activities</b>					
0011 Cash Receipts From Users	221,834			221,834	
0012 Cash Receipts From Assessments Made to Other Funds					
0013 Cash Receipts From Earnings on Investments					
0014 Cash Receipts From Other Operating Revenue					
0015 Cash Payments To Employees For Services	443,222			443,222	
0016 Cash Payments For Insurance Claims					
0017 Cash Payments To Suppliers For Goods and Services	310,777			310,777	
0018 Cash Payments For Other Operating Expenses	220			220	
<b>Net Cash Provided By (Used For) Operating Activities</b>	<b>(\$532,385)</b>			<b>(\$532,385)</b>	
<b>Cash Flows From Non-Capital Financing Activities</b>					
0021 Receipts From Local Sources - 6000	10,828			10,828	
0022 Receipts From State Sources - 7000	85,141			85,141	
0023 Receipts From Federal Sources -8000	408,285			408,285	
0024 Notes and Loans Received (Repaid)					
0025 Interest Paid on Notes/Loans - 5100-830					
0026 Operating Transfers In (Out)/Residual Equity Trans					
0027 Operating Transfers In (Out) Primary Government / Comp Unit	69,739			69,739	
0028 Receipts From Refund of Prior Year Expenditures - 6991					
0029 Special and Extraordinary Gains (losses)					
0030 Receipts from Insurance Recoveries -9990					
<b>Net Cash Prov By (Used for) Non-Capital Financing Activities</b>	<b>\$573,993</b>			<b>\$573,993</b>	
<b>Cash Flows From Capital and Related Financing Activities</b>					
0031 Payments For Fac Acq, Const, and Imp - 4000	(8,444)			(8,444)	
0032 Gain / (Loss) on Sale of Fixed Assets - 6930					
0033 Proceeds From Extended Term Financing - 9200					
0034 Principal Paid on Financing Agreements					
0035 Interest Paid on Financing Agreements - 5100-830					
0036 (Inc) Dec in Contributed Capital					
<b>Net Cash Prov By (Used for) Capital and Related Financing Activities</b>	<b>(\$8,444)</b>			<b>(\$8,444)</b>	
<b>Cash Flows From Investing Activities</b>					
0041 Earnings on Investments - 6500	2,151			2,151	
0042 Purchase of Inv Securities / Deposits to Inv Pools					
0043 Receipts From Investment Pool Withdrawals					
0044 Proceeds from Sale and Maturity of Inv Securities					

0045 Loans Received (Paid)

Net Cash Prov By (Used for) Investing Activities	\$2,151	\$2,151
--	---------	---------

	<u>Food Service</u> <u>(51)</u>	<u>Child Care Operations</u> <u>(52)</u>	<u>Other Enterprise</u> <u>(58)</u>	<u>TOTAL</u>	<u>Internal Service</u> <u>(60)</u>
<b>Net Increase (Decrease) in Cash Flows</b>	<b>35,315</b>			<b>35,315</b>	
0004 Cash and Cash Equivalents Beginning of Year	309,916			309,916	
<b>Cash and Cash Equivalents at Year End</b>	<b>\$345,231</b>			<b>\$345,231</b>	
<hr/>					
<b>Reconciliation of Operating Income (Loss) To Net Cash Provided by (Used For) Operating Activities</b>					
0005 Operating Income (Loss) per REP	(636,696)			(636,696)	
<b>Adjustments</b>					
0051 Depreciation and Net Amortization	36,390			36,390	
0052 Provision for Uncollectible Accounts					
0053 Other Adjustments	43,381			43,381	
<b>Effect of Changes in Assets, Liabilities, Deferred Outflows and Deferred Inflows</b>					
0054 (Inc) Dec In Accounts Receivable (0120-0150)	(1,020)			(1,020)	
0055 Advances to Other Funds (0160)					
0056 (Inc) Dec in Inventories (0170)	(20,138)			(20,138)	
0057 (Inc) Dec in Prepaid Expenses (0180)					
0058 (Inc) Dec in Other Current or Noncurrent Assets					
0064 Deferred Outflows (0910)					
0059 Inc (Dec) in Accounts Payable (0400-0450)	3,781			3,781	
0060 Inc (Dec) in Accrued Salaries/Benefits (0461)	1,319			1,319	
0065 Inc (Dec) in Net Pension Liabilities (0570)	13,517			13,517	
0066 Inc (Dec) in Other Postemp Benefit Oblig (0560)					
0061 Inc (Dec) in Payroll Deductions/Withholding (0462)					
0062 Inc (Dec) in Unearned Revenue (0480)	22,576			22,576	
0063 Inc (Dec) in Other Current or Noncurrent Liabilities	4,505			4,505	
0067 Deferred Inflows (0950)					
<b>Total Adjustments</b>	<b>\$104,311</b>			<b>\$104,311</b>	
<b>Cash Provided By (Used for) Total</b>	<b>(\$532,385)</b>			<b>(\$532,385)</b>	



**COMBINED STATEMENT OF CASH FLOWS**  
**SCHEDULE OF NONCASH INVESTING, CAPITAL, AND FINANCING ACTIVITIES**

<b>Explanation of Transaction and Balance Sheet Effect</b>	<b>Amount</b>
During the year ended 6/30/2020 the district received USDA Donated Commodities in the food service fund	65,956
<b>Total</b>	<b>\$65,956</b>

Amounts Expressed in Whole Dollars	<u>Private Purpose Trust</u> (71)	<u>Investment Trust</u> (72)	<u>Pension Trust</u> (73)	<u>Student Activity Custodial</u> (81)
<b>Assets And Deferred Outflows Of Resources</b>				
<b>Assets</b>				
0100 Cash and Cash Equivalents	7,051			58,001
0110 Investments	185,067			
0130 Due From Other Funds	10,000			
0140 Due from Other Governments, Primary Government and Component Units				
0150 Other Receivables				
0170 Inventories				
0180 Prepaid Expenses (Expenditures)				
0190 Other Current Assets				
0220 Buildings and Building Improvements (Net)				
0230 Machinery, Equipment and Furniture (Net)				
<b>Total Assets</b>	<b>\$202,118</b>			<b>\$58,001</b>
0910 Deferred Outflows of Resources				
<b>Total Assets And Deferred Outflows Of Resources</b>	<b>\$202,118</b>			<b>\$58,001</b>

Amounts Expressed in Whole Dollars	<u>Other Custodial</u> <u>(89)</u>	<u>Fiduciary Component Units</u> <u>(98)</u>	<u>Total Fiduciary Funds</u>
<b>Assets And Deferred Outflows Of Resources</b>			
<b>Assets</b>			
0100 Cash and Cash Equivalents			65,052
0110 Investments			185,067
0130 Due From Other Funds			10,000
0140 Due from Other Governments, Primary Government and Component Units			
0150 Other Receivables			
0170 Inventories			
0180 Prepaid Expenses (Expenditures)			
0190 Other Current Assets			
0220 Buildings and Building Improvements (Net)			
0230 Machinery, Equipment and Furniture (Net)			
<b>Total Assets</b>			<b>\$260,119</b>
0910 Deferred Outflows of Resources			
<b>Total Assets And Deferred Outflows Of Resources</b>			<b>\$260,119</b>

Amounts Expressed in Whole Dollars	<u>Private Purpose Trust</u> <u>(71)</u>	<u>Investment Trust</u> <u>(72)</u>	<u>Pension Trust</u> <u>(73)</u>	<u>Student Activity Custodial</u> <u>(81)</u>
<b>Liabilities, Deferred Inflows Of Resources And Net Position</b>				
<b>Liabilities</b>				
0400 Due to Other Funds				
0410 Due to Other Governments, Primary Government and Component Units				
0420 Accounts Payable				58,001
0430 Contracts Payable				
0450 Short-Term Payables				
0460 Payroll Accruals and Withholdings				
0480 Unearned Revenues				
0490 Other Current Liabilities				
<b>Total Liabilities</b>				<b>\$58,001</b>
0950 Deferred Inflows of Resources				
<b>Net Position</b>				
0791 Net Investment in Capital Assets				
0009 Restricted Net Position (0792 – 0798)	202,118			
0799 Unrestricted Net Position				
<b>Total Net Position</b>	<b>\$202,118</b>			
<b>Total Liabilities, Deferred Inflows Of Resources And Net Position</b>	<b>\$202,118</b>			<b>\$58,001</b>

Amounts Expressed in Whole Dollars	<u>Other Custodial</u> (89)	<u>Fiduciary Component Units</u> (98)	<u>Total Fiduciary Funds</u>
<b>Liabilities, Deferred Inflows Of Resources And Net Position</b>			
<b>Liabilities</b>			
0400 Due to Other Funds			
0410 Due to Other Governments, Primary Government and Component Units			
0420 Accounts Payable			58,001
0430 Contracts Payable			
0450 Short-Term Payables			
0460 Payroll Accruals and Withholdings			
0480 Unearned Revenues			
0490 Other Current Liabilities			
<b>Total Liabilities</b>			<b>\$58,001</b>
0950 Deferred Inflows of Resources			
<b>Net Position</b>			
0791 Net Investment in Capital Assets			
0009 Restricted Net Position (0792 – 0798)			202,118
0799 Unrestricted Net Position			
<b>Total Net Position</b>			<b>\$202,118</b>
<b>Total Liabilities, Deferred Inflows Of Resources And Net Position</b>			<b>\$260,119</b>

Amounts Expressed in Whole Dollars	<u>Private Purpose Trust</u> <u>(71)</u>	<u>Investment Trust</u> <u>(72)</u>	<u>Pension Trust</u> <u>(73)</u>	<u>Student Activity</u> <u>Custodial</u> <u>(81)</u>	<u>Other Custodial</u> <u>(89)</u>	<u>Fiduciary Component</u> <u>Units</u> <u>(98)</u>
<b>Additions</b>						
0091 Gifts and Contributions						
0095 Net Investment Earnings	4,685					
0092 Other Additions						
<b>Deductions</b>						
0093 Scholarships Awarded						
0094 Other Deductions						
<b>Change In Net Position</b>	<b>\$4,685</b>					
0006 Net Position – Beginning of Fiscal Year		197,433				
0007 Net Position Held in Trust for Pension Benefits						
<b>Net Position - End of Fiscal Year</b>		<b>\$202,118</b>				

Amounts Expressed in Whole Dollars	<u>Total Fiduciary Funds</u>
<b>Additions</b>	
0091 Gifts and Contributions	
0095 Net Investment Earnings	4,685
0092 Other Additions	
<b>Deductions</b>	
0093 Scholarships Awarded	
0094 Other Deductions	
<b>Change In Net Position</b>	<b>\$4,685</b>
0006 Net Position – Beginning of Fiscal Year	197,433
0007 Net Position Held in Trust for Pension Benefits	
<b>Net Position - End of Fiscal Year</b>	<b>\$202,118</b>



	<u>Revenue Reported In Current Year</u>	<u>Current Year Tax Accrual</u>	<u>Prior Year Tax Accrual</u>	<u>Taxes Collected In Current Year</u>
<b><u>Revenue from Local Sources</u></b>				
6111 Current Real Estate Taxes	7,677,818.94			7,677,818.94
6112 Interim Real Estate Taxes	5,325.73			5,325.73
6113 Public Utility Realty Taxes	8,173.07			8,173.07
6114 Payments in Lieu of Current Taxes - State / Local	2,205.24			2,205.24
6143 Current Act 511 Local Services Taxes	13,705.68			13,705.68
6151 Current Act 511 Earned Income Taxes	1,202,398.91			1,202,398.91
6153 Current Act 511 Real Estate Transfer Taxes	131,370.36			131,370.36
6411 Delinquent Real Estate Taxes	533,511.10			533,511.10
6420 Delinquent Per Capita Taxes, Section 679	163.50			163.50
6451 Delinquent Act 511 Earned Income Taxes	14,330.54			14,330.54
6500 Earnings on Investments	147,598.75			
6700 Revenues from LEA Activities	53,837.01			
6821 State Revenue Received from Other Pennsylvania Public LEAs	6,414.76			
6832 Federal IDEA Revenue Received as Pass Through	211,378.44			
6910 Rentals	31,703.32			
6920 Contributions and Donations from Private Sources	21,540.48			
6991 Refunds of a Prior Year Expenditure	9,906.96			
6999 Other Revenues Not Specified Above	8,455.34			
<b>TOTAL Revenue from Local Sources</b>	<b>\$10,079,838.13</b>			<b>\$9,589,003.07</b>

	<b>Revenue Reported In Current Year</b>
<b><u>Revenue from State Sources</u></b>	
7111 Basic Education Funding-Formula	8,095,738.03
7112 Basic Education Funding-Social Security	386,488.35
7160 Tuition for Orphans Subsidy	1,157.12
7271 Special Education funds for School-Aged Pupils	1,087,370.44
7311 Pupil Transportation Subsidy	656,909.85
7312 Nonpublic and Charter School Pupil Transportation Subsidy	22,715.00
7330 Health Services (Medical, Dental, Nurse, Act 25)	24,260.91
7340 State Property Tax Reduction Allocation	500,118.37
7361 School Safety and Security Grants	22,017.43
7505 Ready to Learn Block Grant	268,806.00
7810 State Share of Social Security and Medicare Taxes	(0.29)
7820 State Share of Retirement Contributions	1,814,517.27
<b>TOTAL Revenue from State Sources</b>	<b>\$12,880,098.48</b>

	<b>Revenue Reported In Current Year</b>
<b><u>Revenue from Federal Sources</u></b>	
8514 NCLB, Title I - Improving the Academic Achievement of the Disadvantaged	303,926.00
8515 NCLB, Title II - Preparing, Training and Recruiting High Quality Teachers and Principals	46,549.32
8517 NCLB, Title IV - 21st Century Schools	24,508.00
8749 Other CARES Act Funding	34,551.50
8820 Medical Assistance Reimbursement for Administrative Claiming (Quarterly) Program	7,433.51
<b>TOTAL Revenue from Federal Sources</b>	<b>\$416,968.33</b>

	<b>Revenue Reported <u>In Current Year</u></b>	
<u>Other Financing Sources</u>		
9400 Sale of or Compensation for Loss of Fixed Assets	14,753.71	
<b>TOTAL Other Financing Sources</b>	<b>\$14,753.71</b>	
<b>TOTAL FROM ALL SOURCES</b>	<b>\$23,391,658.65</b>	<b>\$9,589,003.07</b>

	<u>General Fund (10)</u>	<u>Student Sponsored Activity Fund (21)</u>	<u>Public Purpose Trust (27)</u>	<u>Other Compt Approved (28)</u>	<u>Athletic / Activity (29)</u>	<u>Capital Reserve (690, 1850) (31)</u>
<b>6000 Revenue from Local Sources</b>						
6111 Current Real Estate Taxes	7,677,818.94					
6112 Interim Real Estate Taxes	5,325.73					
6113 Public Utility Realty Taxes	8,173.07					
6114 Payments in Lieu of Current Taxes - State / Local	2,205.24					
6143 Current Act 511 Local Services Taxes	13,705.68					
6151 Current Act 511 Earned Income Taxes	1,202,398.91					
6153 Current Act 511 Real Estate Transfer Taxes	131,370.36					
6411 Delinquent Real Estate Taxes	533,511.10					
6420 Delinquent Per Capita Taxes, Section 679	163.50					
6451 Delinquent Act 511 Earned Income Taxes	14,330.54					
6500 Earnings on Investments	147,598.75					
6700 Revenues from LEA Activities	53,837.01					
6821 State Revenue Received from Other Pennsylvania Public LEAs	6,414.76					
6832 Federal IDEA Revenue Received as Pass Through	211,378.44					
6910 Rentals	31,703.32					
6920 Contributions and Donations from Private Sources	21,540.48					
6991 Refunds of a Prior Year Expenditure	9,906.96					
6999 Other Revenues Not Specified Above	8,455.34					
<b>6000 Total Revenue from Local Sources</b>	<b>\$10,079,838.13</b>					
<b>7000 Revenue from State Sources</b>						
7111 Basic Education Funding-Formula	8,095,738.03					
7112 Basic Education Funding-Social Security	386,488.35					
7160 Tuition for Orphans Subsidy	1,157.12					
7271 Special Education funds for School-Aged Pupils	1,087,370.44					
7311 Pupil Transportation Subsidy	656,909.85					
7312 Nonpublic and Charter School Pupil Transportation Subsidy	22,715.00					
7330 Health Services (Medical, Dental, Nurse, Act 25)	24,260.91					
7340 State Property Tax Reduction Allocation	500,118.37					
7361 School Safety and Security Grants	22,017.43					
7505 Ready to Learn Block Grant	268,806.00					
7810 State Share of Social Security and Medicare Taxes	(0.29)					
7820 State Share of Retirement Contributions	1,814,517.27					
<b>7000 Total Revenue from State Sources</b>	<b>\$12,880,098.48</b>					
<b>8000 Revenue from Federal Sources</b>						
8514 NCLB, Title I - Improving the Academic Achievement of the Disadvantaged	303,926.00					

	<u>Capital Reserve</u> <u>(1431) (32)</u>	<u>Other Capital</u> <u>Projects Fund (39)</u>	<u>Debt Service (40)</u>	<u>Permanent (90)</u>	<u>Total</u>
<b>6000 Revenue from Local Sources</b>					
6111 Current Real Estate Taxes					7,677,818.94
6112 Interim Real Estate Taxes					5,325.73
6113 Public Utility Realty Taxes					8,173.07
6114 Payments in Lieu of Current Taxes - State / Local					2,205.24
6143 Current Act 511 Local Services Taxes					13,705.68
6151 Current Act 511 Earned Income Taxes					1,202,398.91
6153 Current Act 511 Real Estate Transfer Taxes					131,370.36
6411 Delinquent Real Estate Taxes					533,511.10
6420 Delinquent Per Capita Taxes, Section 679					163.50
6451 Delinquent Act 511 Earned Income Taxes					14,330.54
6500 Earnings on Investments		35,226.40			182,825.15
6700 Revenues from LEA Activities					53,837.01
6821 State Revenue Received from Other Pennsylvania Public LEAs					6,414.76
6832 Federal IDEA Revenue Received as Pass Through					211,378.44
6910 Rentals					31,703.32
6920 Contributions and Donations from Private Sources					21,540.48
6991 Refunds of a Prior Year Expenditure					9,906.96
6999 Other Revenues Not Specified Above					8,455.34
<b>6000 Total Revenue from Local Sources</b>		<b>\$35,226.40</b>			<b>\$10,115,064.53</b>
<b>7000 Revenue from State Sources</b>					
7111 Basic Education Funding-Formula					8,095,738.03
7112 Basic Education Funding-Social Security					386,488.35
7160 Tuition for Orphans Subsidy					1,157.12
7271 Special Education funds for School-Aged Pupils					1,087,370.44
7311 Pupil Transportation Subsidy					656,909.85
7312 Nonpublic and Charter School Pupil Transportation Subsidy					22,715.00
7330 Health Services (Medical, Dental, Nurse, Act 25)					24,260.91
7340 State Property Tax Reduction Allocation					500,118.37
7361 School Safety and Security Grants					22,017.43
7505 Ready to Learn Block Grant					268,806.00
7810 State Share of Social Security and Medicare Taxes					(0.29)
7820 State Share of Retirement Contributions					1,814,517.27
<b>7000 Total Revenue from State Sources</b>					<b>\$12,880,098.48</b>
<b>8000 Revenue from Federal Sources</b>					
8514 NCLB, Title I - Improving the Academic Achievement of the Disadvantaged					303,926.00

LEA : 127042853 Freedom Area SD

Printed 12/10/2020 12:52:29 PM

	<u>General Fund (10)</u>	<u>Student Sponsored Activity Fund (21)</u>	<u>Public Purpose Trust (27)</u>	<u>Other Compt Approved (28)</u>	<u>Athletic / Activity (29)</u>	<u>Capital Reserve (690, 1850) (31)</u>
<b>8000 Revenue from Federal Sources</b>						
8515 NCLB, Title II - Preparing, Training and Recruiting High Quality Teachers and Principals	46,549.32					
8517 NCLB, Title IV - 21st Century Schools	24,508.00					
8749 Other CARES Act Funding	34,551.50					
8820 Medical Assistance Reimbursement for Administrative Claiming (Quarterly) Program	7,433.51					
<b>8000 Total Revenue from Federal Sources</b>	<b>\$416,968.33</b>					
<b>9000 Other Financing Sources</b>						
9310 General Fund Transfers						
9400 Sale of or Compensation for Loss of Fixed Assets	14,753.71					
<b>9000 Total Other Financing Sources</b>	<b>\$14,753.71</b>					
<b>Total From All Sources</b>	<b>\$23,391,658.65</b>					

	<u>Capital Reserve</u> <u>(1431) (32)</u>	<u>Other Capital</u> <u>Projects Fund (39)</u>	<u>Debt Service (40)</u>	<u>Permanent (90)</u>	<u>Total</u>
<b>8000 Revenue from Federal Sources</b>					
8515 NCLB, Title II - Preparing, Training and Recruiting High Quality Teachers and Principals					46,549.32
8517 NCLB, Title IV - 21st Century Schools					24,508.00
8749 Other CARES Act Funding					34,551.50
8820 Medical Assistance Reimbursement for Administrative Claiming (Quarterly) Program					7,433.51
<b>8000 Total Revenue from Federal Sources</b>					<b>\$416,968.33</b>
<b>9000 Other Financing Sources</b>					
9310 General Fund Transfers		500,000.00			500,000.00
9400 Sale of or Compensation for Loss of Fixed Assets		25,500.00			40,253.71
<b>9000 Total Other Financing Sources</b>		<b>\$525,500.00</b>			<b>\$540,253.71</b>
<b>Total From All Sources</b>		<b>\$560,726.40</b>			<b>\$23,952,385.05</b>



	<u>General Fund (10)</u>	<u>Student Sponsored Activity Fund (21)</u>	<u>Public Purpose Trust (27)</u>	<u>Other Compt Approved (28)</u>	<u>Athletic / Activity (29)</u>	<u>Capital Reserve (690, 1850) (31)</u>
Revenue from Local Sources	10,079,838.13					
Revenue from State Sources	12,880,098.48					
Revenue from Federal Sources	416,968.33					
Other Financing Sources	14,753.71					
<b>Total From All Sources</b>	<b>\$23,391,658.65</b>					

	<u>Capital Reserve (1431)</u> <u>(32)</u>	<u>Other Capital Projects</u> <u>Fund (39)</u>	<u>Debt Service (40)</u>	<u>Permanent (90)</u>	<u>Total</u>
Revenue from Local Sources		35,226.40			10,115,064.53
Revenue from State Sources					12,880,098.48
Revenue from Federal Sources					416,968.33
Other Financing Sources		525,500.00			540,253.71
<b>Total From All Sources</b>		<b>\$560,726.40</b>			<b>\$23,952,385.05</b>

## General Fund (10)

## 1000 Instruction

100 Personnel Services – Salaries

100 Personnel Services – Salaries

6,283,476.93

**Total Personnel Services – Salaries****\$6,283,476.93**200 Personnel Services – Employee Benefits

210 Group Insurance – Contracted Provider

6,673.65

220 Social Security Contributions

474,086.07

230 PSERS Retirement Contributions

2,132,383.79

250 Unemployment Compensation

897.22

260 Workers' Compensation

36,995.41

270 Group Insurance – Self-Insurance

1,729,206.77

292 Health Savings Accounts

150,920.00

**Total Personnel Services – Employee Benefits****\$4,531,162.91**300 Purchased Professional and Technical Services

322 Professional Educational Services – Ius

437,993.18

323 Professional Educational Services – Other Educational Agencies

144,649.86

329 Professional Educational Services – Other

1,179.57

330 Other Professional Services

63,962.91

340 Technical Services

2,479.00

**Total Purchased Professional and Technical Services****\$650,264.52**400 Purchased Property Services

430 Repairs and Maintenance Services

9,538.02

**Total Purchased Property Services****\$9,538.02**500 Other Purchased Services

510 Student Transportation Services

11,467.00

562 Tuition To Pennsylvania Charter Schools

1,051,906.45

563 Tuition To Nonpublic Schools

376,634.27

564 Tuition To Career and Technology Centers

387,374.93

567 Tuition To Approved Private Schools (APS) and PA Chartered Schools for the Deaf and Blind

140,265.22

568 Tuition To Private Residential Rehabilitative Institutions (PRRI) [In-State] and Detention Centers

69,779.35

580 Travel

569.08

**Total Other Purchased Services****\$2,037,996.30**600 Supplies

610 General Supplies

400,004.52

640 Books and Periodicals

82,589.68

650 Supplies &amp; Fees – Technology Related

22,400.00

**Total Supplies****\$504,994.20**700 Property

758 Capitalized Technology Software - Original

34,551.50

768 Capitalized Technology Software - Replacement

179,247.72

**Total Property****\$213,799.22**800 Other Objects

General Fund (10)

1000 Instruction

Total

800 Other Objects

810 Dues and Fees

3,200.00

**Total Other Objects**

**\$3,200.00**

**Total 1000 Instruction**

**\$14,234,432.10**

General Fund (10)

1100 Regular Programs – Elementary / Secondary	Elementary	Secondary	Federal	Total
<b>100 Personnel Services – Salaries</b>				
100 Personnel Services – Salaries	2,263,398.79	2,628,198.06	215,400.34	5,106,997.19
<b>Total Personnel Services – Salaries</b>	<b>\$2,263,398.79</b>	<b>\$2,628,198.06</b>	<b>\$215,400.34</b>	<b>\$5,106,997.19</b>
<b>200 Personnel Services – Employee Benefits</b>				
210 Group Insurance – Contracted Provider	2,311.15	2,935.73	220.07	5,466.95
220 Social Security Contributions	170,603.94	198,523.53	14,762.59	383,890.06
230 PSERS Retirement Contributions	753,999.02	905,377.61	63,540.74	1,722,917.37
250 Unemployment Compensation		897.22		897.22
260 Workers' Compensation	13,885.98	15,482.71	621.46	29,990.15
270 Group Insurance – Self-Insurance	654,954.57	703,846.75	56,211.90	1,415,013.22
292 Health Savings Accounts	59,486.00	66,346.00		125,832.00
<b>Total Personnel Services – Employee Benefits</b>	<b>\$1,655,240.66</b>	<b>\$1,893,409.55</b>	<b>\$135,356.76</b>	<b>\$3,684,006.97</b>
<b>300 Purchased Professional and Technical Services</b>				
322 Professional Educational Services – Ius	30,750.00	5,962.60		36,712.60
323 Professional Educational Services – Other Educational Agencies	91,987.80	33,897.44		125,885.24
329 Professional Educational Services – Other	62.37	1,117.20		1,179.57
340 Technical Services	2,479.00			2,479.00
<b>Total Purchased Professional and Technical Services</b>	<b>\$125,279.17</b>	<b>\$40,977.24</b>		<b>\$166,256.41</b>
<b>400 Purchased Property Services</b>				
430 Repairs and Maintenance Services		9,526.63		9,526.63
<b>Total Purchased Property Services</b>		<b>\$9,526.63</b>		<b>\$9,526.63</b>
<b>500 Other Purchased Services</b>				
510 Student Transportation Services		11,290.00		11,290.00
562 Tuition To Pennsylvania Charter Schools	186,410.48	368,403.18		554,813.66
580 Travel	43.50	43.50		87.00
<b>Total Other Purchased Services</b>	<b>\$186,453.98</b>	<b>\$379,736.68</b>		<b>\$566,190.66</b>
<b>600 Supplies</b>				
610 General Supplies	130,651.21	240,922.69	14,739.59	386,313.49
640 Books and Periodicals		82,589.68		82,589.68
650 Supplies & Fees – Technology Related		22,400.00		22,400.00
<b>Total Supplies</b>	<b>\$130,651.21</b>	<b>\$345,912.37</b>	<b>\$14,739.59</b>	<b>\$491,303.17</b>
<b>700 Property</b>				
758 Capitalized Technology Software - Original			34,551.50	34,551.50
768 Capitalized Technology Software - Replacement	57,500.00	82,500.00	39,247.72	179,247.72
<b>Total Property</b>	<b>\$57,500.00</b>	<b>\$82,500.00</b>	<b>\$73,799.22</b>	<b>\$213,799.22</b>
<b>800 Other Objects</b>				
810 Dues and Fees		2,088.00		2,088.00
<b>Total Other Objects</b>		<b>\$2,088.00</b>		<b>\$2,088.00</b>
<b>Total 1100 Regular Programs – Elementary / Secondary</b>	<b>\$4,418,523.81</b>	<b>\$5,382,348.53</b>	<b>\$439,295.91</b>	<b>\$10,240,168.25</b>

General Fund (10)

1110 Regular Programs	Elementary	Secondary	Federal	Total
<b>100 Personnel Services – Salaries</b>				
100 Personnel Services – Salaries	2,263,398.79	2,628,198.06		4,891,596.85
<b>Total Personnel Services – Salaries</b>	<b>\$2,263,398.79</b>	<b>\$2,628,198.06</b>		<b>\$4,891,596.85</b>
<b>200 Personnel Services – Employee Benefits</b>				
210 Group Insurance – Contracted Provider	2,311.15	2,935.73		5,246.88
220 Social Security Contributions	170,603.94	198,523.53		369,127.47
230 PSERS Retirement Contributions	753,999.02	905,377.61		1,659,376.63
250 Unemployment Compensation		897.22		897.22
260 Workers' Compensation	13,885.98	15,482.71		29,368.69
270 Group Insurance – Self-Insurance	654,954.57	703,846.75		1,358,801.32
292 Health Savings Accounts	59,486.00	66,346.00		125,832.00
<b>Total Personnel Services – Employee Benefits</b>	<b>\$1,655,240.66</b>	<b>\$1,893,409.55</b>		<b>\$3,548,650.21</b>
<b>300 Purchased Professional and Technical Services</b>				
322 Professional Educational Services – Ius	30,750.00	5,962.60		36,712.60
323 Professional Educational Services – Other Educational Agencies	91,987.80	33,897.44		125,885.24
329 Professional Educational Services – Other	62.37	1,117.20		1,179.57
340 Technical Services	2,479.00			2,479.00
<b>Total Purchased Professional and Technical Services</b>	<b>\$125,279.17</b>	<b>\$40,977.24</b>		<b>\$166,256.41</b>
<b>400 Purchased Property Services</b>				
430 Repairs and Maintenance Services		9,526.63		9,526.63
<b>Total Purchased Property Services</b>		<b>\$9,526.63</b>		<b>\$9,526.63</b>
<b>500 Other Purchased Services</b>				
510 Student Transportation Services		11,290.00		11,290.00
562 Tuition To Pennsylvania Charter Schools	186,410.48	368,403.18		554,813.66
580 Travel	43.50	43.50		87.00
<b>Total Other Purchased Services</b>	<b>\$186,453.98</b>	<b>\$379,736.68</b>		<b>\$566,190.66</b>
<b>600 Supplies</b>				
610 General Supplies	130,651.21	240,922.69		371,573.90
640 Books and Periodicals		82,589.68		82,589.68
650 Supplies & Fees – Technology Related		22,400.00		22,400.00
<b>Total Supplies</b>	<b>\$130,651.21</b>	<b>\$345,912.37</b>		<b>\$476,563.58</b>
<b>700 Property</b>				
758 Capitalized Technology Software - Original			34,551.50	34,551.50
768 Capitalized Technology Software - Replacement	57,500.00	82,500.00	39,247.72	179,247.72
<b>Total Property</b>	<b>\$57,500.00</b>	<b>\$82,500.00</b>	<b>\$73,799.22</b>	<b>\$213,799.22</b>
<b>800 Other Objects</b>				
810 Dues and Fees		2,088.00		2,088.00
<b>Total Other Objects</b>		<b>\$2,088.00</b>		<b>\$2,088.00</b>
<b>Total 1110 Regular Programs</b>	<b>\$4,418,523.81</b>	<b>\$5,382,348.53</b>	<b>\$73,799.22</b>	<b>\$9,874,671.56</b>

General Fund (10)

1190 Federally-Funded Regular Programs	<u>Elementary</u>	<u>Secondary</u>	<u>Federal</u>	<u>Total</u>
<b>100 Personnel Services – Salaries</b>				
100 Personnel Services – Salaries			215,400.34	215,400.34
<b>Total Personnel Services – Salaries</b>			<b>\$215,400.34</b>	<b>\$215,400.34</b>
<b>200 Personnel Services – Employee Benefits</b>				
210 Group Insurance – Contracted Provider			220.07	220.07
220 Social Security Contributions			14,762.59	14,762.59
230 PSERS Retirement Contributions			63,540.74	63,540.74
260 Workers' Compensation			621.46	621.46
270 Group Insurance – Self-Insurance			56,211.90	56,211.90
<b>Total Personnel Services – Employee Benefits</b>			<b>\$135,356.76</b>	<b>\$135,356.76</b>
<b>600 Supplies</b>				
610 General Supplies			14,739.59	14,739.59
<b>Total Supplies</b>			<b>\$14,739.59</b>	<b>\$14,739.59</b>
<b>Total 1190 Federally-Funded Regular Programs</b>			<b>\$365,496.69</b>	<b>\$365,496.69</b>

General Fund (10)

1200 Special Programs – Elementary / Secondary	<u>Elementary</u>	<u>Secondary</u>	<u>Federal</u>	<u>Total</u>
<b>100 Personnel Services – Salaries</b>				
100 Personnel Services – Salaries	555,874.14	447,850.99	172,474.61	1,176,199.74
<b>Total Personnel Services – Salaries</b>	<b>\$555,874.14</b>	<b>\$447,850.99</b>	<b>\$172,474.61</b>	<b>\$1,176,199.74</b>
<b>200 Personnel Services – Employee Benefits</b>				
210 Group Insurance – Contracted Provider	548.57	560.18	97.95	1,206.70
220 Social Security Contributions	41,706.25	35,274.19	13,194.35	90,174.79
230 PSERS Retirement Contributions	190,494.39	161,450.52	57,425.50	409,370.41
260 Workers' Compensation	3,258.41	2,736.88	1,008.37	7,003.66
270 Group Insurance – Self-Insurance	168,192.09	116,468.06	29,533.40	314,193.55
292 Health Savings Accounts	14,973.00	7,763.00	2,352.00	25,088.00
<b>Total Personnel Services – Employee Benefits</b>	<b>\$419,172.71</b>	<b>\$324,252.83</b>	<b>\$103,611.57</b>	<b>\$847,037.11</b>
<b>300 Purchased Professional and Technical Services</b>				
322 Professional Educational Services – lus	201,485.98	199,794.60		401,280.58
323 Professional Educational Services – Other Educational Agencies	5,526.90	6,520.50		12,047.40
330 Other Professional Services	51,798.32	12,164.59		63,962.91
<b>Total Purchased Professional and Technical Services</b>	<b>\$258,811.20</b>	<b>\$218,479.69</b>		<b>\$477,290.89</b>
<b>400 Purchased Property Services</b>				
430 Repairs and Maintenance Services	11.39			11.39
<b>Total Purchased Property Services</b>	<b>\$11.39</b>			<b>\$11.39</b>
<b>500 Other Purchased Services</b>				
510 Student Transportation Services	177.00			177.00
562 Tuition To Pennsylvania Charter Schools	255,258.45	241,834.34		497,092.79
563 Tuition To Nonpublic Schools	172,006.91	198,316.29	6,311.07	376,634.27
567 Tuition To Approved Private Schools (APS) and PA Chartered Schools for the Deaf and Blind	85,521.95	54,743.27		140,265.22
568 Tuition To Private Residential Rehabilitative Institutions (PRRI) [In-State] and Detention Centers	51,436.88	18,342.47		69,779.35
580 Travel		482.08		482.08
<b>Total Other Purchased Services</b>	<b>\$564,401.19</b>	<b>\$513,718.45</b>	<b>\$6,311.07</b>	<b>\$1,084,430.71</b>
<b>600 Supplies</b>				
610 General Supplies	9,197.16	3,775.23	718.64	13,691.03
<b>Total Supplies</b>	<b>\$9,197.16</b>	<b>\$3,775.23</b>	<b>\$718.64</b>	<b>\$13,691.03</b>
<b>800 Other Objects</b>				
810 Dues and Fees	354.00	758.00		1,112.00
<b>Total Other Objects</b>	<b>\$354.00</b>	<b>\$758.00</b>		<b>\$1,112.00</b>
<b>Total 1200 Special Programs – Elementary / Secondary</b>	<b>\$1,807,821.79</b>	<b>\$1,508,835.19</b>	<b>\$283,115.89</b>	<b>\$3,599,772.87</b>



General Fund (10)

1210 Life Skills Support

	<u>Elementary</u>	<u>Secondary</u>	<u>Federal</u>	<u>Total</u>
<b>100 Personnel Services – Salaries</b>				
100 Personnel Services – Salaries		12,381.27	50,839.00	63,220.27
<b>Total Personnel Services – Salaries</b>		<b>\$12,381.27</b>	<b>\$50,839.00</b>	<b>\$63,220.27</b>
<b>200 Personnel Services – Employee Benefits</b>				
210 Group Insurance – Contracted Provider			71.83	71.83
220 Social Security Contributions		947.19	3,889.18	4,836.37
230 PSERS Retirement Contributions		4,245.52	17,432.73	21,678.25
260 Workers' Compensation		70.56	299.92	370.48
270 Group Insurance – Self-Insurance			18,966.20	18,966.20
292 Health Savings Accounts			1,960.00	1,960.00
<b>Total Personnel Services – Employee Benefits</b>		<b>\$5,263.27</b>	<b>\$42,619.86</b>	<b>\$47,883.13</b>
<b>300 Purchased Professional and Technical Services</b>				
322 Professional Educational Services – Ius	119,399.99	39,800.02		159,200.01
<b>Total Purchased Professional and Technical Services</b>	<b>\$119,399.99</b>	<b>\$39,800.02</b>		<b>\$159,200.01</b>
<b>500 Other Purchased Services</b>				
568 Tuition To Private Residential Rehabilitative Institutions (PRRI) [In-State] and Detention Centers		2,728.91		2,728.91
<b>Total Other Purchased Services</b>		<b>\$2,728.91</b>		<b>\$2,728.91</b>
<b>600 Supplies</b>				
610 General Supplies		1,625.08		1,625.08
<b>Total Supplies</b>		<b>\$1,625.08</b>		<b>\$1,625.08</b>
<b>Total 1210 Life Skills Support</b>	<b>\$119,399.99</b>	<b>\$61,798.55</b>	<b>\$93,458.86</b>	<b>\$274,657.40</b>

General Fund (10)

1220 Sensory Support

100 Personnel Services – Salaries

100 Personnel Services – Salaries

	<u>Elementary</u>	<u>Secondary</u>	<u>Federal</u>	<u>Total</u>
--	-------------------	------------------	----------------	--------------

94,836.69	41,272.31			136,109.00
-----------	-----------	--	--	------------

**Total Personnel Services – Salaries**

<b>\$94,836.69</b>	<b>\$41,272.31</b>			<b>\$136,109.00</b>
--------------------	--------------------	--	--	---------------------

200 Personnel Services – Employee Benefits

210 Group Insurance – Contracted Provider

220 Social Security Contributions

230 PSERS Retirement Contributions

260 Workers' Compensation

270 Group Insurance – Self-Insurance

292 Health Savings Accounts

106.26	37.40			143.66
--------	-------	--	--	--------

7,131.84	3,073.91			10,205.75
----------	----------	--	--	-----------

32,519.52	14,152.31			46,671.83
-----------	-----------	--	--	-----------

559.56	243.46			803.02
--------	--------	--	--	--------

28,069.98	9,862.42			37,932.40
-----------	----------	--	--	-----------

2,901.00	1,019.00			3,920.00
----------	----------	--	--	----------

**Total Personnel Services – Employee Benefits**

<b>\$71,288.16</b>	<b>\$28,388.50</b>			<b>\$99,676.66</b>
--------------------	--------------------	--	--	--------------------

400 Purchased Property Services

430 Repairs and Maintenance Services

11.39				11.39
-------	--	--	--	-------

**Total Purchased Property Services**

<b>\$11.39</b>				<b>\$11.39</b>
----------------	--	--	--	----------------

600 Supplies

610 General Supplies

2,333.21				2,333.21
----------	--	--	--	----------

**Total Supplies**

<b>\$2,333.21</b>				<b>\$2,333.21</b>
-------------------	--	--	--	-------------------

**Total 1220 Sensory Support**

<b>\$168,469.45</b>	<b>\$69,660.81</b>			<b>\$238,130.26</b>
---------------------	--------------------	--	--	---------------------

General Fund (10)

	<u>Elementary</u>	<u>Secondary</u>	<u>Federal</u>	<u>Total</u>
<b>1230 Emotional Support</b>				
<b>300 <u>Purchased Professional and Technical Services</u></b>				
322 Professional Educational Services – lus	1,690.00	119,836.39		121,526.39
<b>Total Purchased Professional and Technical Services</b>	<b>\$1,690.00</b>	<b>\$119,836.39</b>		<b>\$121,526.39</b>
<b>500 <u>Other Purchased Services</u></b>				
563 Tuition To Nonpublic Schools	170,765.91	198,316.29	6,311.07	375,393.27
<b>Total Other Purchased Services</b>	<b>\$170,765.91</b>	<b>\$198,316.29</b>	<b>\$6,311.07</b>	<b>\$375,393.27</b>
<b>600 <u>Supplies</u></b>				
610 General Supplies	101.10	101.10		202.20
<b>Total Supplies</b>	<b>\$101.10</b>	<b>\$101.10</b>		<b>\$202.20</b>
<b>Total 1230 Emotional Support</b>	<b>\$172,557.01</b>	<b>\$318,253.78</b>	<b>\$6,311.07</b>	<b>\$497,121.86</b>

General Fund (10)

	<u>Elementary</u>	<u>Secondary</u>	<u>Federal</u>	<u>Total</u>
<b>1240 Academic Support</b>				
<b>100 Personnel Services – Salaries</b>				
100 Personnel Services – Salaries	428,766.08	361,926.18	121,635.61	912,327.87
<b>Total Personnel Services – Salaries</b>	<b>\$428,766.08</b>	<b>\$361,926.18</b>	<b>\$121,635.61</b>	<b>\$912,327.87</b>
<b>200 Personnel Services – Employee Benefits</b>				
210 Group Insurance – Contracted Provider	406.45	486.81	26.12	919.38
220 Social Security Contributions	32,128.54	28,807.44	9,305.17	70,241.15
230 PERS Retirement Contributions	146,908.94	131,986.92	39,992.77	318,888.63
260 Workers' Compensation	2,509.67	2,233.74	708.45	5,451.86
270 Group Insurance – Self-Insurance	131,171.95	97,655.50	10,567.20	239,394.65
292 Health Savings Accounts	11,092.00	5,764.00	392.00	17,248.00
<b>Total Personnel Services – Employee Benefits</b>	<b>\$324,217.55</b>	<b>\$266,934.41</b>	<b>\$60,991.71</b>	<b>\$652,143.67</b>
<b>300 Purchased Professional and Technical Services</b>				
323 Professional Educational Services – Other Educational Agencies	5,526.90	6,520.50		12,047.40
<b>Total Purchased Professional and Technical Services</b>	<b>\$5,526.90</b>	<b>\$6,520.50</b>		<b>\$12,047.40</b>
<b>500 Other Purchased Services</b>				
510 Student Transportation Services	177.00			177.00
562 Tuition To Pennsylvania Charter Schools	255,258.45	241,834.34		497,092.79
580 Travel		482.08		482.08
<b>Total Other Purchased Services</b>	<b>\$255,435.45</b>	<b>\$242,316.42</b>		<b>\$497,751.87</b>
<b>600 Supplies</b>				
610 General Supplies	6,762.85	2,049.05	718.64	9,530.54
<b>Total Supplies</b>	<b>\$6,762.85</b>	<b>\$2,049.05</b>	<b>\$718.64</b>	<b>\$9,530.54</b>
<b>800 Other Objects</b>				
810 Dues and Fees	354.00	758.00		1,112.00
<b>Total Other Objects</b>	<b>\$354.00</b>	<b>\$758.00</b>		<b>\$1,112.00</b>
<b>Total 1240 Academic Support</b>	<b>\$1,021,062.83</b>	<b>\$880,504.56</b>	<b>\$183,345.96</b>	<b>\$2,084,913.35</b>

General Fund (10)

	<u>Elementary</u>	<u>Secondary</u>	<u>Federal</u>	<u>Total</u>
<b>1241 Learning Support – Public</b>				
<b>100 Personnel Services – Salaries</b>				
100 Personnel Services – Salaries	387,321.74	339,121.52	80,322.03	806,765.29
<b>Total Personnel Services – Salaries</b>	<b>\$387,321.74</b>	<b>\$339,121.52</b>	<b>\$80,322.03</b>	<b>\$806,765.29</b>
<b>200 Personnel Services – Employee Benefits</b>				
210 Group Insurance – Contracted Provider	359.15	427.01		786.16
220 Social Security Contributions	29,002.38	25,713.13	6,144.69	60,860.20
230 PSERS Retirement Contributions	132,697.67	116,293.36	27,542.47	276,533.50
260 Workers' Compensation	2,265.73	1,997.44	461.01	4,724.18
270 Group Insurance – Self-Insurance	118,654.25	89,308.00	6,633.00	214,595.25
292 Health Savings Accounts	9,800.00	4,508.00		14,308.00
<b>Total Personnel Services – Employee Benefits</b>	<b>\$292,779.18</b>	<b>\$238,246.94</b>	<b>\$40,781.17</b>	<b>\$571,807.29</b>
<b>300 Purchased Professional and Technical Services</b>				
323 Professional Educational Services – Other Educational Agencies	5,526.90	6,520.50		12,047.40
<b>Total Purchased Professional and Technical Services</b>	<b>\$5,526.90</b>	<b>\$6,520.50</b>		<b>\$12,047.40</b>
<b>500 Other Purchased Services</b>				
562 Tuition To Pennsylvania Charter Schools	255,258.45	241,834.34		497,092.79
580 Travel		177.00		177.00
<b>Total Other Purchased Services</b>	<b>\$255,258.45</b>	<b>\$242,011.34</b>		<b>\$497,269.79</b>
<b>600 Supplies</b>				
610 General Supplies	2,660.92	890.84	718.64	4,270.40
<b>Total Supplies</b>	<b>\$2,660.92</b>	<b>\$890.84</b>	<b>\$718.64</b>	<b>\$4,270.40</b>
<b>Total 1241 Learning Support – Public</b>	<b>\$943,547.19</b>	<b>\$826,791.14</b>	<b>\$121,821.84</b>	<b>\$1,892,160.17</b>

General Fund (10)

	<u>Elementary</u>	<u>Secondary</u>	<u>Federal</u>	<u>Total</u>
<b>1243 Gifted Support</b>				
<b>100 Personnel Services – Salaries</b>				
100 Personnel Services – Salaries	41,444.34	22,804.66	41,313.58	105,562.58
<b>Total Personnel Services – Salaries</b>	<b>\$41,444.34</b>	<b>\$22,804.66</b>	<b>\$41,313.58</b>	<b>\$105,562.58</b>
<b>200 Personnel Services – Employee Benefits</b>				
210 Group Insurance – Contracted Provider	47.30	59.80	26.12	133.22
220 Social Security Contributions	3,126.16	3,094.31	3,160.48	9,380.95
230 PSERS Retirement Contributions	14,211.27	15,693.56	12,450.30	42,355.13
260 Workers' Compensation	243.94	236.30	247.44	727.68
270 Group Insurance – Self-Insurance	12,517.70	8,347.50	3,934.20	24,799.40
292 Health Savings Accounts	1,292.00	1,256.00	392.00	2,940.00
<b>Total Personnel Services – Employee Benefits</b>	<b>\$31,438.37</b>	<b>\$28,687.47</b>	<b>\$20,210.54</b>	<b>\$80,336.38</b>
<b>500 Other Purchased Services</b>				
510 Student Transportation Services	177.00			177.00
580 Travel		305.08		305.08
<b>Total Other Purchased Services</b>	<b>\$177.00</b>	<b>\$305.08</b>		<b>\$482.08</b>
<b>600 Supplies</b>				
610 General Supplies	4,101.93	1,158.21		5,260.14
<b>Total Supplies</b>	<b>\$4,101.93</b>	<b>\$1,158.21</b>		<b>\$5,260.14</b>
<b>800 Other Objects</b>				
810 Dues and Fees	354.00	758.00		1,112.00
<b>Total Other Objects</b>	<b>\$354.00</b>	<b>\$758.00</b>		<b>\$1,112.00</b>
<b>Total 1243 Gifted Support</b>	<b>\$77,515.64</b>	<b>\$53,713.42</b>	<b>\$61,524.12</b>	<b>\$192,753.18</b>

General Fund (10)

1260 Physical Support

300 Purchased Professional and Technical Services

330 Other Professional Services

**Total Purchased Professional and Technical Services**

**Total 1260 Physical Support**

	<u>Elementary</u>	<u>Secondary</u>	<u>Federal</u>	<u>Total</u>
	51,798.32	12,164.59		63,962.91
<b>Total Purchased Professional and Technical Services</b>	<b>\$51,798.32</b>	<b>\$12,164.59</b>		<b>\$63,962.91</b>
<b>Total 1260 Physical Support</b>	<b>\$51,798.32</b>	<b>\$12,164.59</b>		<b>\$63,962.91</b>

General Fund (10)

	<u>Elementary</u>	<u>Secondary</u>	<u>Federal</u>	<u>Total</u>
<b>1270 Multi-Handicapped Support</b>				
<b>100 Personnel Services – Salaries</b>				
100 Personnel Services – Salaries	32,271.37	32,271.23		64,542.60
<b>Total Personnel Services – Salaries</b>	<b>\$32,271.37</b>	<b>\$32,271.23</b>		<b>\$64,542.60</b>
<b>200 Personnel Services – Employee Benefits</b>				
210 Group Insurance – Contracted Provider	35.86	35.97		71.83
220 Social Security Contributions	2,445.87	2,445.65		4,891.52
230 PSERS Retirement Contributions	11,065.93	11,065.77		22,131.70
260 Workers' Compensation	189.18	189.12		378.30
270 Group Insurance – Self-Insurance	8,950.16	8,950.14		17,900.30
292 Health Savings Accounts	980.00	980.00		1,960.00
<b>Total Personnel Services – Employee Benefits</b>	<b>\$23,667.00</b>	<b>\$23,666.65</b>		<b>\$47,333.65</b>
<b>300 Purchased Professional and Technical Services</b>				
322 Professional Educational Services – Ius	80,395.99	40,158.19		120,554.18
<b>Total Purchased Professional and Technical Services</b>	<b>\$80,395.99</b>	<b>\$40,158.19</b>		<b>\$120,554.18</b>
<b>500 Other Purchased Services</b>				
563 Tuition To Nonpublic Schools	1,241.00			1,241.00
568 Tuition To Private Residential Rehabilitative Institutions (PRRI) [In-State] and Detention Centers	51,436.88	15,613.56		67,050.44
<b>Total Other Purchased Services</b>	<b>\$52,677.88</b>	<b>\$15,613.56</b>		<b>\$68,291.44</b>
<b>Total 1270 Multi-Handicapped Support</b>	<b>\$189,012.24</b>	<b>\$111,709.63</b>		<b>\$300,721.87</b>



General Fund (10)

1290 Special Programs - Other Support

500 Other Purchased Services

567 Tuition To Approved Private Schools (APS) and PA Chartered Schools for the Deaf and Blind

**Total Other Purchased Services**

**Total 1290 Special Programs - Other Support**

	<u>Elementary</u>	<u>Secondary</u>	<u>Federal</u>	<u>Total</u>
	85,521.95	54,743.27		140,265.22
<b>Total Other Purchased Services</b>	<b>\$85,521.95</b>	<b>\$54,743.27</b>		<b>\$140,265.22</b>
<b>Total 1290 Special Programs - Other Support</b>	<b>\$85,521.95</b>	<b>\$54,743.27</b>		<b>\$140,265.22</b>

General Fund (10)

1300 Vocational Education

500 Other Purchased Services

564 Tuition To Career and Technology Centers

**Total Other Purchased Services**

**Total 1300 Vocational Education**

	<u>Elementary</u>	<u>Secondary</u>	<u>Federal</u>	<u>Total</u>
		387,374.93		387,374.93
		<b>\$387,374.93</b>		<b>\$387,374.93</b>
		<b>\$387,374.93</b>		<b>\$387,374.93</b>

General Fund (10)

	<u>Elementary</u>	<u>Secondary</u>	<u>Federal</u>	<u>Total</u>
1400 Other Instructional Programs – Elementary / Secondary				
100 <u>Personnel Services – Salaries</u>				
100 Personnel Services – Salaries	280.00			280.00
<b>Total Personnel Services – Salaries</b>	<b>\$280.00</b>			<b>\$280.00</b>
200 <u>Personnel Services – Employee Benefits</u>				
220 Social Security Contributions	21.22			21.22
230 PSERS Retirement Contributions	96.01			96.01
260 Workers' Compensation	1.60			1.60
<b>Total Personnel Services – Employee Benefits</b>	<b>\$118.83</b>			<b>\$118.83</b>
<b>Total 1400 Other Instructional Programs – Elementary / Secondary</b>	<b>\$398.83</b>			<b>\$398.83</b>

General Fund (10)

	<u>Elementary</u>	<u>Secondary</u>	<u>Federal</u>	<u>Total</u>
<b>1430 Homebound Instruction</b>				
<b>100 Personnel Services – Salaries</b>				
100 Personnel Services – Salaries	280.00			280.00
<b>Total Personnel Services – Salaries</b>	<b>\$280.00</b>			<b>\$280.00</b>
<b>200 Personnel Services – Employee Benefits</b>				
220 Social Security Contributions	21.22			21.22
230 PSERS Retirement Contributions	96.01			96.01
260 Workers' Compensation	1.60			1.60
<b>Total Personnel Services – Employee Benefits</b>	<b>\$118.83</b>			<b>\$118.83</b>
<b>Total 1430 Homebound Instruction</b>	<b>\$398.83</b>			<b>\$398.83</b>

LEA : 127042853 Freedom Area SD

Printed 12/10/2020 12:52:51 PM

General Fund (10)

1500 Nonpublic School Programs

300 Purchased Professional and Technical Services

323 Professional Educational Services – Other Educational Agencies

**Total Purchased Professional and Technical Services**

**Total 1500 Nonpublic School Programs**

	<u>Elementary</u>	<u>Secondary</u>	<u>Federal</u>	<u>Total</u>
			6,717.22	6,717.22
			<b>\$6,717.22</b>	<b>\$6,717.22</b>
			<b>\$6,717.22</b>	<b>\$6,717.22</b>

**General Fund (10)**

**2000 Support Services**

**Total**

**100 Personnel Services – Salaries**

100 Personnel Services – Salaries

2,541,763.97

**Total Personnel Services – Salaries**

**\$2,541,763.97**

**200 Personnel Services – Employee Benefits**

210 Group Insurance – Contracted Provider

5,393.07

220 Social Security Contributions

189,766.73

230 PSERS Retirement Contributions

852,879.55

240 Tuition Reimbursement

11,342.44

260 Workers' Compensation

14,683.31

270 Group Insurance – Self-Insurance

666,664.00

292 Health Savings Accounts

56,350.00

**Total Personnel Services – Employee Benefits**

**\$1,797,079.10**

**300 Purchased Professional and Technical Services**

323 Professional Educational Services – Other Educational Agencies

8,521.20

329 Professional Educational Services – Other

85,951.92

330 Other Professional Services

89,389.03

340 Technical Services

107,244.66

350 Security / Safety Services

72,324.44

**Total Purchased Professional and Technical Services**

**\$363,431.25**

**400 Purchased Property Services**

410 Cleaning Services

14,271.39

420 Utility Services

18,765.51

430 Repairs and Maintenance Services

95,056.29

440 Rentals

45,724.56

**Total Purchased Property Services**

**\$173,817.75**

**500 Other Purchased Services**

510 Student Transportation Services

316.00

513 Contracted Carriers

1,114,841.40

516 Student Transportation Services From the IU

7,240.08

520 Insurance – General

65.50

523 General Property and Liability Insurance

69,672.00

530 Communications

26,082.93

549 Other Advertising/Public Relations

7,706.80

550 Printing and Binding

1,970.04

580 Travel

11,667.52

591 Services Purchased Locally

739.52

595 IU Payments By Withholding

12,027.75

**Total Other Purchased Services**

**\$1,252,329.54**

**600 Supplies**

610 General Supplies

223,174.00

620 Energy

373,072.11

640 Books and Periodicals

8,099.43

**Total Supplies**

**\$604,345.54**

LEA : 127042853 Freedom Area SD

Printed 12/10/2020 12:53:12 PM

General Fund (10)

2000 Support Services

Total

700 <u>Property</u>	
762 Capitalized Equipment - Replacement	(400.00)
768 Capitalized Technology Software - Replacement	206.72

<b>Total Property</b>	<b>(\$193.28)</b>
-----------------------	-------------------

800 Other Objects

810 Dues and Fees	18,188.76
-------------------	-----------

<b>Total Other Objects</b>	<b>\$18,188.76</b>
----------------------------	--------------------

<b>Total 2000 Support Services</b>	<b>\$6,750,762.63</b>
------------------------------------	-----------------------

General Fund (10)

2100 Support Services – Students

	<u>Elementary</u>	<u>Secondary</u>	<u>Federal</u>	<u>Total</u>
<b>100 Personnel Services – Salaries</b>				
100 Personnel Services – Salaries	161,592.79	290,995.36		507,169.41
<b>Total Personnel Services – Salaries</b>	<b>\$161,592.79</b>	<b>\$290,995.36</b>		<b>\$507,169.41</b>
<b>200 Personnel Services – Employee Benefits</b>				
210 Group Insurance – Contracted Provider	279.25	447.56		726.81
220 Social Security Contributions	12,120.58	22,014.20		38,310.01
230 PSERS Retirement Contributions	54,129.64	99,741.83		172,458.77
260 Workers' Compensation	945.48	1,714.98		2,973.23
270 Group Insurance – Self-Insurance	53,078.77	70,257.63		129,572.40
292 Health Savings Accounts	4,567.00	6,213.00		10,780.00
<b>Total Personnel Services – Employee Benefits</b>	<b>\$125,120.72</b>	<b>\$200,389.20</b>		<b>\$354,821.22</b>
<b>300 Purchased Professional and Technical Services</b>				
329 Professional Educational Services – Other				54,280.00
340 Technical Services	7,750.00	7,750.00		26,500.00
<b>Total Purchased Professional and Technical Services</b>	<b>\$7,750.00</b>	<b>\$7,750.00</b>		<b>\$80,780.00</b>
<b>500 Other Purchased Services</b>				
510 Student Transportation Services		316.00		316.00
<b>Total Other Purchased Services</b>		<b>\$316.00</b>		<b>\$316.00</b>
<b>600 Supplies</b>				
610 General Supplies	5,189.71	10,004.69		15,194.40
<b>Total Supplies</b>	<b>\$5,189.71</b>	<b>\$10,004.69</b>		<b>\$15,194.40</b>
<b>Total 2100 Support Services – Students</b>	<b>\$299,653.22</b>	<b>\$509,455.25</b>		<b>\$958,281.03</b>



General Fund (10)

2120 Guidance Services

	<u>Elementary</u>	<u>Secondary</u>	<u>Federal</u>	<u>Total</u>
<b>100 Personnel Services – Salaries</b>				
100 Personnel Services – Salaries	104,406.37	237,543.60		341,949.97
<b>Total Personnel Services – Salaries</b>	<b>\$104,406.37</b>	<b>\$237,543.60</b>		<b>\$341,949.97</b>
<b>200 Personnel Services – Employee Benefits</b>				
210 Group Insurance – Contracted Provider	95.48	263.67		359.15
220 Social Security Contributions	7,859.54	18,025.35		25,884.89
230 PSERS Retirement Contributions	35,800.92	81,413.25		117,214.17
260 Workers' Compensation	619.42	1,410.32		2,029.74
270 Group Insurance – Self-Insurance	33,374.97	51,533.85		84,908.82
292 Health Savings Accounts	2,607.00	4,253.00		6,860.00
<b>Total Personnel Services – Employee Benefits</b>	<b>\$80,357.33</b>	<b>\$156,899.44</b>		<b>\$237,256.77</b>
<b>300 Purchased Professional and Technical Services</b>				
340 Technical Services	7,750.00	7,750.00		15,500.00
<b>Total Purchased Professional and Technical Services</b>	<b>\$7,750.00</b>	<b>\$7,750.00</b>		<b>\$15,500.00</b>
<b>500 Other Purchased Services</b>				
510 Student Transportation Services		316.00		316.00
<b>Total Other Purchased Services</b>		<b>\$316.00</b>		<b>\$316.00</b>
<b>600 Supplies</b>				
610 General Supplies	3,135.68	6,502.54		9,638.22
<b>Total Supplies</b>	<b>\$3,135.68</b>	<b>\$6,502.54</b>		<b>\$9,638.22</b>
<b>Total 2120 Guidance Services</b>	<b>\$195,649.38</b>	<b>\$409,011.58</b>		<b>\$604,660.96</b>

General Fund (10)

	<u>Elementary</u>	<u>Secondary</u>	<u>Federal</u>	<u>Total</u>
<b>2130 Attendance Services</b>				
<b>100 Personnel Services – Salaries</b>				
100 Personnel Services – Salaries				34,718.76
<b>Total Personnel Services – Salaries</b>				<b>\$34,718.76</b>
<b>200 Personnel Services – Employee Benefits</b>				
220 Social Security Contributions				2,656.02
230 PSERS Retirement Contributions				11,776.50
260 Workers' Compensation				199.05
<b>Total Personnel Services – Employee Benefits</b>				<b>\$14,631.57</b>
<b>300 Purchased Professional and Technical Services</b>				
340 Technical Services				11,000.00
<b>Total Purchased Professional and Technical Services</b>				<b>\$11,000.00</b>
<b>Total 2130 Attendance Services</b>				<b>\$60,350.33</b>

General Fund (10)

2140 Psychological Services

100 Personnel Services – Salaries

100 Personnel Services – Salaries

	<u>Elementary</u>	<u>Secondary</u>	<u>Federal</u>	<u>Total</u>
--	-------------------	------------------	----------------	--------------

57,186.42	53,451.76		110,638.18
-----------	-----------	--	------------

**Total Personnel Services – Salaries**

<b>\$57,186.42</b>	<b>\$53,451.76</b>		<b>\$110,638.18</b>
--------------------	--------------------	--	---------------------

200 Personnel Services – Employee Benefits

210 Group Insurance – Contracted Provider

220 Social Security Contributions

230 PSERS Retirement Contributions

260 Workers' Compensation

270 Group Insurance – Self-Insurance

292 Health Savings Accounts

183.77	183.89		367.66
--------	--------	--	--------

4,261.04	3,988.85		8,249.89
----------	----------	--	----------

18,328.72	18,328.58		36,657.30
-----------	-----------	--	-----------

326.06	304.66		630.72
--------	--------	--	--------

19,703.80	18,723.78		38,427.58
-----------	-----------	--	-----------

1,960.00	1,960.00		3,920.00
----------	----------	--	----------

**Total Personnel Services – Employee Benefits**

<b>\$44,763.39</b>	<b>\$43,489.76</b>		<b>\$88,253.15</b>
--------------------	--------------------	--	--------------------

600 Supplies

610 General Supplies

2,054.03	3,502.15		5,556.18
----------	----------	--	----------

**Total Supplies**

<b>\$2,054.03</b>	<b>\$3,502.15</b>		<b>\$5,556.18</b>
-------------------	-------------------	--	-------------------

**Total 2140 Psychological Services**

<b>\$104,003.84</b>	<b>\$100,443.67</b>		<b>\$204,447.51</b>
---------------------	---------------------	--	---------------------

General Fund (10)

2160 Social Work Services

300 Purchased Professional and Technical Services

329 Professional Educational Services – Other

**Total Purchased Professional and Technical Services**

**Total 2160 Social Work Services**

Elementary

Secondary

Federal

Total

54,280.00

**\$54,280.00**

**\$54,280.00**

General Fund (10)

2170 Student Accounting Services

100 Personnel Services – Salaries

100 Personnel Services – Salaries

Elementary

Secondary

Federal

Total

19,862.50

**Total Personnel Services – Salaries**

**\$19,862.50**

200 Personnel Services – Employee Benefits

220 Social Security Contributions

230 PSERS Retirement Contributions

260 Workers' Compensation

270 Group Insurance – Self-Insurance

1,519.21

6,810.80

113.72

6,236.00

**Total Personnel Services – Employee Benefits**

**\$14,679.73**

**Total 2170 Student Accounting Services**

**\$34,542.23**

General Fund (10)

2200 Support Services – Instructional Staff

	<u>Elementary</u>	<u>Secondary</u>	<u>Federal</u>	<u>Total</u>
<b>100 Personnel Services – Salaries</b>				
100 Personnel Services – Salaries	84,714.94	29,700.74		114,415.68
<b>Total Personnel Services – Salaries</b>	<b>\$84,714.94</b>	<b>\$29,700.74</b>		<b>\$114,415.68</b>
<b>200 Personnel Services – Employee Benefits</b>				
210 Group Insurance – Contracted Provider	107.69	35.97		143.66
220 Social Security Contributions	6,348.26	2,252.39		8,600.65
230 PSERS Retirement Contributions	29,048.73	10,184.42		39,233.15
240 Tuition Reimbursement	2,738.62	8,603.82		11,342.44
260 Workers' Compensation	499.75	174.92		674.67
270 Group Insurance – Self-Insurance	29,354.07	3,942.14		33,296.21
292 Health Savings Accounts	2,450.00			2,450.00
<b>Total Personnel Services – Employee Benefits</b>	<b>\$70,547.12</b>	<b>\$25,193.66</b>		<b>\$95,740.78</b>
<b>300 Purchased Professional and Technical Services</b>				
323 Professional Educational Services – Other Educational Agencies	3,415.70	5,105.50		8,521.20
329 Professional Educational Services – Other	5,097.03	6,574.89		11,671.92
340 Technical Services	2,250.00	2,250.00		4,500.00
<b>Total Purchased Professional and Technical Services</b>	<b>\$10,762.73</b>	<b>\$13,930.39</b>		<b>\$24,693.12</b>
<b>500 Other Purchased Services</b>				
580 Travel		1,591.84		1,591.84
<b>Total Other Purchased Services</b>		<b>\$1,591.84</b>		<b>\$1,591.84</b>
<b>600 Supplies</b>				
610 General Supplies	1,408.22	3,182.89		4,591.11
640 Books and Periodicals	5,101.23	2,998.20		8,099.43
<b>Total Supplies</b>	<b>\$6,509.45</b>	<b>\$6,181.09</b>		<b>\$12,690.54</b>
<b>Total 2200 Support Services – Instructional Staff</b>	<b>\$172,534.24</b>	<b>\$76,597.72</b>		<b>\$249,131.96</b>

General Fund (10)

	<u>Elementary</u>	<u>Secondary</u>	<u>Federal</u>	<u>Total</u>
2240 Computer-Assisted Instruction Support Services				
300 <u>Purchased Professional and Technical Services</u>				
340 Technical Services	500.00	500.00		1,000.00
<b>Total Purchased Professional and Technical Services</b>	<b>\$500.00</b>	<b>\$500.00</b>		<b>\$1,000.00</b>
<b>Total 2240 Computer-Assisted Instruction Support Services</b>	<b>\$500.00</b>	<b>\$500.00</b>		<b>\$1,000.00</b>

General Fund (10)

2250 School Library Services	<u>Elementary</u>	<u>Secondary</u>	<u>Federal</u>	<u>Total</u>
<b>100 Personnel Services – Salaries</b>				
100 Personnel Services – Salaries	84,636.19	28,500.74		113,136.93
<b>Total Personnel Services – Salaries</b>	<b>\$84,636.19</b>	<b>\$28,500.74</b>		<b>\$113,136.93</b>
<b>200 Personnel Services – Employee Benefits</b>				
210 Group Insurance – Contracted Provider	107.69	35.97		143.66
220 Social Security Contributions	6,342.58	2,162.11		8,504.69
230 PSERS Retirement Contributions	29,021.73	9,772.94		38,794.67
260 Workers' Compensation	499.31	168.08		667.39
270 Group Insurance – Self-Insurance	29,284.81	3,942.14		33,226.95
292 Health Savings Accounts	2,450.00			2,450.00
<b>Total Personnel Services – Employee Benefits</b>	<b>\$67,706.12</b>	<b>\$16,081.24</b>		<b>\$83,787.36</b>
<b>300 Purchased Professional and Technical Services</b>				
340 Technical Services	1,750.00	1,750.00		3,500.00
<b>Total Purchased Professional and Technical Services</b>	<b>\$1,750.00</b>	<b>\$1,750.00</b>		<b>\$3,500.00</b>
<b>600 Supplies</b>				
610 General Supplies	1,408.22	1,983.78		3,392.00
640 Books and Periodicals	5,101.23	2,998.20		8,099.43
<b>Total Supplies</b>	<b>\$6,509.45</b>	<b>\$4,981.98</b>		<b>\$11,491.43</b>
<b>Total 2250 School Library Services</b>	<b>\$160,601.76</b>	<b>\$51,313.96</b>		<b>\$211,915.72</b>



General Fund (10)

2260 Instruction and Curriculum Development Services

600 Supplies

610 General Supplies

**Total Supplies**

**Total 2260 Instruction and Curriculum Development Services**

Elementary

Secondary

Federal

Total

33.61

33.61

**\$33.61**

**\$33.61**

**\$33.61**

**\$33.61**

General Fund (10)

2270 Instructional Staff Professional Development Services

	<u>Elementary</u>	<u>Secondary</u>	<u>Federal</u>	<u>Total</u>
<b>100 Personnel Services – Salaries</b>				
100 Personnel Services – Salaries	78.75	1,200.00		1,278.75
<b>Total Personnel Services – Salaries</b>	<b>\$78.75</b>	<b>\$1,200.00</b>		<b>\$1,278.75</b>
<b>200 Personnel Services – Employee Benefits</b>				
220 Social Security Contributions	5.68	90.28		95.96
230 PSERS Retirement Contributions	27.00	411.48		438.48
240 Tuition Reimbursement	2,738.62	8,603.82		11,342.44
260 Workers' Compensation	0.44	6.84		7.28
270 Group Insurance – Self-Insurance	69.26			69.26
<b>Total Personnel Services – Employee Benefits</b>	<b>\$2,841.00</b>	<b>\$9,112.42</b>		<b>\$11,953.42</b>
<b>300 Purchased Professional and Technical Services</b>				
323 Professional Educational Services – Other Educational Agencies	3,415.70	5,105.50		8,521.20
329 Professional Educational Services – Other	5,097.03	6,574.89		11,671.92
<b>Total Purchased Professional and Technical Services</b>	<b>\$8,512.73</b>	<b>\$11,680.39</b>		<b>\$20,193.12</b>
<b>500 Other Purchased Services</b>				
580 Travel		1,591.84		1,591.84
<b>Total Other Purchased Services</b>		<b>\$1,591.84</b>		<b>\$1,591.84</b>
<b>600 Supplies</b>				
610 General Supplies		1,165.50		1,165.50
<b>Total Supplies</b>		<b>\$1,165.50</b>		<b>\$1,165.50</b>
<b>Total 2270 Instructional Staff Professional Development Services</b>	<b>\$11,432.48</b>	<b>\$24,750.15</b>		<b>\$36,182.63</b>

## General Fund (10)

## 2300 Support Services – Administration

100 Personnel Services – Salaries

100 Personnel Services – Salaries

ElementarySecondaryFederalTotal

218,764.69

294,171.62

735,614.03

**Total Personnel Services – Salaries****\$218,764.69****\$294,171.62****\$735,614.03**200 Personnel Services – Employee Benefits

210 Group Insurance – Contracted Provider

611.38

919.27

2,661.73

220 Social Security Contributions

16,326.61

22,339.36

54,458.56

230 PSERS Retirement Contributions

75,014.26

100,871.45

240,160.30

260 Workers' Compensation

1,267.03

1,690.41

4,230.19

270 Group Insurance – Self-Insurance

80,500.34

60,292.23

177,659.07

292 Health Savings Accounts

5,488.00

5,292.00

14,700.00

**Total Personnel Services – Employee Benefits****\$179,207.62****\$191,404.72****\$493,869.85**300 Purchased Professional and Technical Services

330 Other Professional Services

25,168.58

**Total Purchased Professional and Technical Services****\$25,168.58**400 Purchased Property Services

440 Rentals

1,911.80

**Total Purchased Property Services****\$1,911.80**500 Other Purchased Services

520 Insurance – General

65.50

549 Other Advertising/Public Relations

7,706.80

550 Printing and Binding

1,491.52

365.93

1,970.04

580 Travel

827.59

4,870.55

591 Services Purchased Locally

739.52

**Total Other Purchased Services****\$1,491.52****\$1,193.52****\$15,352.41**600 Supplies

610 General Supplies

7,187.68

13,238.82

39,125.79

**Total Supplies****\$7,187.68****\$13,238.82****\$39,125.79**800 Other Objects

810 Dues and Fees

1,190.00

16,714.96

**Total Other Objects****\$1,190.00****\$16,714.96****Total 2300 Support Services – Administration****\$406,651.51****\$501,198.68****\$1,327,757.42**

General Fund (10)

2310 Board Services

	<u>Elementary</u>	<u>Secondary</u>	<u>Federal</u>	<u>Total</u>
100 <u>Personnel Services – Salaries</u>				
100 Personnel Services – Salaries				3,755.04
<b>Total Personnel Services – Salaries</b>				<b>\$3,755.04</b>
200 <u>Personnel Services – Employee Benefits</u>				
220 Social Security Contributions				276.06
260 Workers' Compensation				21.42
<b>Total Personnel Services – Employee Benefits</b>				<b>\$297.48</b>
500 <u>Other Purchased Services</u>				
520 Insurance – General				65.50
549 Other Advertising/Public Relations				7,706.80
580 Travel				873.47
591 Services Purchased Locally				739.52
<b>Total Other Purchased Services</b>				<b>\$9,385.29</b>
600 <u>Supplies</u>				
610 General Supplies				6,068.50
<b>Total Supplies</b>				<b>\$6,068.50</b>
800 <u>Other Objects</u>				
810 Dues and Fees				11,000.00
<b>Total Other Objects</b>				<b>\$11,000.00</b>
<b>Total 2310 Board Services</b>				<b>\$30,506.31</b>

General Fund (10)

2330 Tax Assessment and Collection Services

100 Personnel Services – Salaries

100 Personnel Services – Salaries

Elementary

Secondary

Federal

Total

28,997.69

**Total Personnel Services – Salaries**

**\$28,997.69**

200 Personnel Services – Employee Benefits

220 Social Security Contributions

260 Workers' Compensation

2,218.42

165.84

**Total Personnel Services – Employee Benefits**

**\$2,384.26**

600 Supplies

610 General Supplies

9,503.51

**Total Supplies**

**\$9,503.51**

**Total 2330 Tax Assessment and Collection Services**

**\$40,885.46**

General Fund (10)

2350 Legal and Accounting Services

300 Purchased Professional and Technical Services

330 Other Professional Services

**Total Purchased Professional and Technical Services**

**Total 2350 Legal and Accounting Services**

Elementary

Secondary

Federal

Total

25,168.58

**\$25,168.58**

**\$25,168.58**

**General Fund (10)**

**2360 Office of the Superintendent / Executive Director Services**

	<u>Elementary</u>	<u>Secondary</u>	<u>Federal</u>	<u>Total</u>
<b>100 Personnel Services – Salaries</b>				
100 Personnel Services – Salaries				189,924.99
<b>Total Personnel Services – Salaries</b>				<b>\$189,924.99</b>
<b>200 Personnel Services – Employee Benefits</b>				
210 Group Insurance – Contracted Provider				1,131.08
220 Social Security Contributions				13,298.11
230 PSERS Retirement Contributions				64,274.59
260 Workers' Compensation				1,085.49
270 Group Insurance – Self-Insurance				36,866.50
292 Health Savings Accounts				3,920.00
<b>Total Personnel Services – Employee Benefits</b>				<b>\$120,575.77</b>
<b>400 Purchased Property Services</b>				
440 Rentals				1,911.80
<b>Total Purchased Property Services</b>				<b>\$1,911.80</b>
<b>500 Other Purchased Services</b>				
550 Printing and Binding				112.59
580 Travel				3,169.49
<b>Total Other Purchased Services</b>				<b>\$3,282.08</b>
<b>600 Supplies</b>				
610 General Supplies				3,127.28
<b>Total Supplies</b>				<b>\$3,127.28</b>
<b>800 Other Objects</b>				
810 Dues and Fees				4,524.96
<b>Total Other Objects</b>				<b>\$4,524.96</b>
<b>Total 2360 Office of the Superintendent / Executive Director Services</b>				<b>\$323,346.88</b>

General Fund (10)

2380 Office of the Principal Services	<u>Elementary</u>	<u>Secondary</u>	<u>Federal</u>	<u>Total</u>
<b>100 Personnel Services – Salaries</b>				
100 Personnel Services – Salaries	218,764.69	294,171.62		512,936.31
<b>Total Personnel Services – Salaries</b>	<b>\$218,764.69</b>	<b>\$294,171.62</b>		<b>\$512,936.31</b>
<b>200 Personnel Services – Employee Benefits</b>				
210 Group Insurance – Contracted Provider	611.38	919.27		1,530.65
220 Social Security Contributions	16,326.61	22,339.36		38,665.97
230 PSERS Retirement Contributions	75,014.26	100,871.45		175,885.71
260 Workers' Compensation	1,267.03	1,690.41		2,957.44
270 Group Insurance – Self-Insurance	80,500.34	60,292.23		140,792.57
292 Health Savings Accounts	5,488.00	5,292.00		10,780.00
<b>Total Personnel Services – Employee Benefits</b>	<b>\$179,207.62</b>	<b>\$191,404.72</b>		<b>\$370,612.34</b>
<b>500 Other Purchased Services</b>				
550 Printing and Binding	1,491.52	365.93		1,857.45
580 Travel		827.59		827.59
<b>Total Other Purchased Services</b>	<b>\$1,491.52</b>	<b>\$1,193.52</b>		<b>\$2,685.04</b>
<b>600 Supplies</b>				
610 General Supplies	7,187.68	13,238.82		20,426.50
<b>Total Supplies</b>	<b>\$7,187.68</b>	<b>\$13,238.82</b>		<b>\$20,426.50</b>
<b>800 Other Objects</b>				
810 Dues and Fees		1,190.00		1,190.00
<b>Total Other Objects</b>		<b>\$1,190.00</b>		<b>\$1,190.00</b>
<b>Total 2380 Office of the Principal Services</b>	<b>\$406,651.51</b>	<b>\$501,198.68</b>		<b>\$907,850.19</b>



General Fund (10)

2400 Support Services – Pupil Health

	<u>Elementary</u>	<u>Secondary</u>	<u>Federal</u>	<u>Total</u>
<b>100 Personnel Services – Salaries</b>				
100 Personnel Services – Salaries				110,286.90
<b>Total Personnel Services – Salaries</b>				<b>\$110,286.90</b>
<b>200 Personnel Services – Employee Benefits</b>				
210 Group Insurance – Contracted Provider				71.83
220 Social Security Contributions				8,436.93
230 PSERS Retirement Contributions				37,756.59
260 Workers' Compensation				639.83
270 Group Insurance – Self-Insurance				20,852.92
292 Health Savings Accounts				1,960.00
<b>Total Personnel Services – Employee Benefits</b>				<b>\$69,718.10</b>
<b>300 Purchased Professional and Technical Services</b>				
330 Other Professional Services				7,999.92
<b>Total Purchased Professional and Technical Services</b>				<b>\$7,999.92</b>
<b>600 Supplies</b>				
610 General Supplies				6,527.69
<b>Total Supplies</b>				<b>\$6,527.69</b>
<b>Total 2400 Support Services – Pupil Health</b>				<b>\$194,532.61</b>

General Fund (10)

2430 Dental Services

600 Supplies

610 General Supplies

**Total Supplies**

**Total 2430 Dental Services**

Elementary

Secondary

Federal

Total

2,037.87

**\$2,037.87**

**\$2,037.87**

General Fund (10)

2440 Nursing Services

100 Personnel Services – Salaries

100 Personnel Services – Salaries

<u>Elementary</u>	<u>Secondary</u>	<u>Federal</u>	<u>Total</u>
-------------------	------------------	----------------	--------------

110,286.90

**Total Personnel Services – Salaries**

**\$110,286.90**

200 Personnel Services – Employee Benefits

210 Group Insurance – Contracted Provider

71.83

220 Social Security Contributions

8,436.93

230 PSERS Retirement Contributions

37,756.59

260 Workers' Compensation

639.83

270 Group Insurance – Self-Insurance

20,852.92

292 Health Savings Accounts

1,960.00

**Total Personnel Services – Employee Benefits**

**\$69,718.10**

300 Purchased Professional and Technical Services

330 Other Professional Services

7,999.92

**Total Purchased Professional and Technical Services**

**\$7,999.92**

600 Supplies

610 General Supplies

4,489.82

**Total Supplies**

**\$4,489.82**

**Total 2440 Nursing Services**

**\$192,494.74**

General Fund (10)

2500 Support Services – Business

100 Personnel Services – Salaries

100 Personnel Services – Salaries

Elementary

Secondary

Federal

Total

169,645.12

**Total Personnel Services – Salaries**

**\$169,645.12**

200 Personnel Services – Employee Benefits

210 Group Insurance – Contracted Provider

220 Social Security Contributions

230 PSERS Retirement Contributions

260 Workers' Compensation

270 Group Insurance – Self-Insurance

292 Health Savings Accounts

489.80

12,519.63

54,623.75

966.06

59,354.47

5,880.00

**Total Personnel Services – Employee Benefits**

**\$133,833.71**

300 Purchased Professional and Technical Services

330 Other Professional Services

340 Technical Services

56,220.53

13,023.66

**Total Purchased Professional and Technical Services**

**\$69,244.19**

500 Other Purchased Services

580 Travel

711.73

**Total Other Purchased Services**

**\$711.73**

600 Supplies

610 General Supplies

4,681.11

**Total Supplies**

**\$4,681.11**

700 Property

768 Capitalized Technology Software - Replacement

206.72

**Total Property**

**\$206.72**

800 Other Objects

810 Dues and Fees

473.80

**Total Other Objects**

**\$473.80**

**Total 2500 Support Services – Business**

**\$378,796.38**

General Fund (10)

2510 Fiscal Services

	<u>Elementary</u>	<u>Secondary</u>	<u>Federal</u>	<u>Total</u>
<b>100 Personnel Services – Salaries</b>				
100 Personnel Services – Salaries				163,856.33
<b>Total Personnel Services – Salaries</b>				<b>\$163,856.33</b>
<b>200 Personnel Services – Employee Benefits</b>				
210 Group Insurance – Contracted Provider				478.91
220 Social Security Contributions				12,076.83
230 PSERS Retirement Contributions				52,638.83
260 Workers' Compensation				933.06
270 Group Insurance – Self-Insurance				56,669.43
292 Health Savings Accounts				5,586.00
<b>Total Personnel Services – Employee Benefits</b>				<b>\$128,383.06</b>
<b>300 Purchased Professional and Technical Services</b>				
330 Other Professional Services				56,220.53
340 Technical Services				13,023.66
<b>Total Purchased Professional and Technical Services</b>				<b>\$69,244.19</b>
<b>500 Other Purchased Services</b>				
580 Travel				711.73
<b>Total Other Purchased Services</b>				<b>\$711.73</b>
<b>600 Supplies</b>				
610 General Supplies				4,681.11
<b>Total Supplies</b>				<b>\$4,681.11</b>
<b>700 Property</b>				
768 Capitalized Technology Software - Replacement				206.72
<b>Total Property</b>				<b>\$206.72</b>
<b>800 Other Objects</b>				
810 Dues and Fees				473.80
<b>Total Other Objects</b>				<b>\$473.80</b>
<b>Total 2510 Fiscal Services</b>				<b>\$367,556.94</b>

General Fund (10)

2511 Supervision of Fiscal Services - Head of Component

	<u>Elementary</u>	<u>Secondary</u>	<u>Federal</u>	<u>Total</u>
<b>100 Personnel Services – Salaries</b>				
100 Personnel Services – Salaries				83,877.41
<b>Total Personnel Services – Salaries</b>				<b>\$83,877.41</b>
<b>200 Personnel Services – Employee Benefits</b>				
210 Group Insurance – Contracted Provider				346.14
220 Social Security Contributions				6,260.12
230 PSERS Retirement Contributions				25,214.04
260 Workers' Compensation				477.20
270 Group Insurance – Self-Insurance				17,850.30
292 Health Savings Accounts				1,960.00
<b>Total Personnel Services – Employee Benefits</b>				<b>\$52,107.80</b>
<b>300 Purchased Professional and Technical Services</b>				
330 Other Professional Services				56,220.53
340 Technical Services				13,023.66
<b>Total Purchased Professional and Technical Services</b>				<b>\$69,244.19</b>
<b>500 Other Purchased Services</b>				
580 Travel				711.73
<b>Total Other Purchased Services</b>				<b>\$711.73</b>
<b>600 Supplies</b>				
610 General Supplies				4,681.11
<b>Total Supplies</b>				<b>\$4,681.11</b>
<b>700 Property</b>				
768 Capitalized Technology Software - Replacement				206.72
<b>Total Property</b>				<b>\$206.72</b>
<b>800 Other Objects</b>				
810 Dues and Fees				473.80
<b>Total Other Objects</b>				<b>\$473.80</b>
<b>Total 2511 Supervision of Fiscal Services - Head of Component</b>				<b>\$211,302.76</b>

General Fund (10)

2513 Receiving and Disbursing Funds Services

	<u>Elementary</u>	<u>Secondary</u>	<u>Federal</u>	<u>Total</u>
<b>100 Personnel Services – Salaries</b>				
100 Personnel Services – Salaries				33,661.39
<b>Total Personnel Services – Salaries</b>				<b>\$33,661.39</b>
<b>200 Personnel Services – Employee Benefits</b>				
210 Group Insurance – Contracted Provider				60.94
220 Social Security Contributions				2,544.80
230 PSERS Retirement Contributions				11,542.46
260 Workers' Compensation				191.91
270 Group Insurance – Self-Insurance				19,562.77
292 Health Savings Accounts				1,666.00
<b>Total Personnel Services – Employee Benefits</b>				<b>\$35,568.88</b>
<b>Total 2513 Receiving and Disbursing Funds Services</b>				<b>\$69,230.27</b>

General Fund (10)

2514 Payroll Services

100 Personnel Services – Salaries

100 Personnel Services – Salaries

Elementary

Secondary

Federal

Total

42,458.34

**Total Personnel Services – Salaries**

**\$42,458.34**

200 Personnel Services – Employee Benefits

210 Group Insurance – Contracted Provider

220 Social Security Contributions

230 PSERS Retirement Contributions

260 Workers' Compensation

270 Group Insurance – Self-Insurance

292 Health Savings Accounts

64.68

2,976.59

14,558.98

241.99

17,466.32

1,764.00

**Total Personnel Services – Employee Benefits**

**\$37,072.56**

**Total 2514 Payroll Services**

**\$79,530.90**



General Fund (10)

2517 Property Accounting Services

100 Personnel Services – Salaries

100 Personnel Services – Salaries

Elementary

Secondary

Federal

Total

3,859.19

**Total Personnel Services – Salaries**

**\$3,859.19**

200 Personnel Services – Employee Benefits

210 Group Insurance – Contracted Provider

220 Social Security Contributions

230 PSERS Retirement Contributions

260 Workers' Compensation

270 Group Insurance – Self-Insurance

292 Health Savings Accounts

7.15

295.32

1,323.35

21.96

1,790.04

196.00

**Total Personnel Services – Employee Benefits**

**\$3,633.82**

**Total 2517 Property Accounting Services**

**\$7,493.01**

General Fund (10)

2520 Purchasing Services

100 Personnel Services – Salaries

100 Personnel Services – Salaries

Elementary

Secondary

Federal

Total

5,788.79

**Total Personnel Services – Salaries**

**\$5,788.79**

200 Personnel Services – Employee Benefits

210 Group Insurance – Contracted Provider

220 Social Security Contributions

230 PSERS Retirement Contributions

260 Workers' Compensation

270 Group Insurance – Self-Insurance

292 Health Savings Accounts

10.89

442.80

1,984.92

33.00

2,685.04

294.00

**Total Personnel Services – Employee Benefits**

**\$5,450.65**

**Total 2520 Purchasing Services**

**\$11,239.44**

General Fund (10)

2600 Operation and Maintenance of Plant Services

100 Personnel Services – Salaries

100 Personnel Services – Salaries

Elementary                      Secondary                      Federal                      Total

767,125.19

**Total Personnel Services – Salaries**

**\$767,125.19**

200 Personnel Services – Employee Benefits

210 Group Insurance – Contracted Provider

937.86

220 Social Security Contributions

57,374.44

230 PSERS Retirement Contributions

262,725.30

260 Workers' Compensation

4,413.18

270 Group Insurance – Self-Insurance

200,303.28

292 Health Savings Accounts

20,580.00

**Total Personnel Services – Employee Benefits**

**\$546,334.06**

300 Purchased Professional and Technical Services

340 Technical Services

1,226.00

350 Security / Safety Services

72,324.44

**Total Purchased Professional and Technical Services**

**\$73,550.44**

400 Purchased Property Services

410 Cleaning Services

14,271.39

420 Utility Services

18,765.51

430 Repairs and Maintenance Services

95,098.79

**Total Purchased Property Services**

**\$128,135.69**

500 Other Purchased Services

523 General Property and Liability Insurance

69,672.00

530 Communications

26,082.93

**Total Other Purchased Services**

**\$95,754.93**

600 Supplies

610 General Supplies

57,047.10

59,047.10

659.76

116,753.96

620 Energy

373,072.11

**Total Supplies**

**\$57,047.10**

**\$59,047.10**

**\$659.76**

**\$489,826.07**

700 Property

762 Capitalized Equipment - Replacement

(400.00)

**Total Property**

**(\$400.00)**

**Total 2600 Operation and Maintenance of Plant Services**

**\$57,047.10**

**\$59,047.10**

**\$659.76**

**\$2,100,326.38**

General Fund (10)

	<u>Elementary</u>	<u>Secondary</u>	<u>Federal</u>	<u>Total</u>
2610 Supervision of Operation and Maintenance of Plant Services				
<b>100 Personnel Services – Salaries</b>				
100 Personnel Services – Salaries				80,198.19
<b>Total Personnel Services – Salaries</b>				<b>\$80,198.19</b>
<b>200 Personnel Services – Employee Benefits</b>				
210 Group Insurance – Contracted Provider				291.83
220 Social Security Contributions				5,870.28
230 PSERS Retirement Contributions				27,500.01
260 Workers' Compensation				457.08
270 Group Insurance – Self-Insurance				17,900.30
292 Health Savings Accounts				1,960.00
<b>Total Personnel Services – Employee Benefits</b>				<b>\$53,979.50</b>
<b>Total 2610 Supervision of Operation and Maintenance of Plant Services</b>				<b>\$134,177.69</b>

General Fund (10)

2611 Supervision of Operation and Maintenance of Plant Services – Head of Component

	<u>Elementary</u>	<u>Secondary</u>	<u>Federal</u>	<u>Total</u>
<b>100 Personnel Services – Salaries</b>				
100 Personnel Services – Salaries				80,198.19
<b>Total Personnel Services – Salaries</b>				<b>\$80,198.19</b>
<b>200 Personnel Services – Employee Benefits</b>				
210 Group Insurance – Contracted Provider				291.83
220 Social Security Contributions				5,870.28
230 PSERS Retirement Contributions				27,500.01
260 Workers' Compensation				457.08
270 Group Insurance – Self-Insurance				17,900.30
292 Health Savings Accounts				1,960.00
<b>Total Personnel Services – Employee Benefits</b>				<b>\$53,979.50</b>
<b>Total 2611 Supervision of Operation and Maintenance of Plant Services – Head of Component</b>				<b>\$134,177.69</b>

General Fund (10)

2620 Operation of Buildings Services

100 Personnel Services – Salaries

100 Personnel Services – Salaries

Elementary                      Secondary                      Federal                      Total

661,705.08

**Total Personnel Services – Salaries**

**\$661,705.08**

200 Personnel Services – Employee Benefits

210 Group Insurance – Contracted Provider

646.03

220 Social Security Contributions

49,574.67

230 PSERS Retirement Contributions

226,576.70

260 Workers' Compensation

3,812.35

270 Group Insurance – Self-Insurance

182,402.98

292 Health Savings Accounts

18,620.00

**Total Personnel Services – Employee Benefits**

**\$481,632.73**

300 Purchased Professional and Technical Services

340 Technical Services

1,226.00

**Total Purchased Professional and Technical Services**

**\$1,226.00**

400 Purchased Property Services

410 Cleaning Services

14,271.39

420 Utility Services

18,765.51

430 Repairs and Maintenance Services

95,098.79

**Total Purchased Property Services**

**\$128,135.69**

500 Other Purchased Services

523 General Property and Liability Insurance

69,672.00

530 Communications

26,082.93

**Total Other Purchased Services**

**\$95,754.93**

600 Supplies

610 General Supplies

57,047.10

59,047.10

659.76

116,753.96

620 Energy

373,072.11

**Total Supplies**

**\$57,047.10**

**\$59,047.10**

**\$659.76**

**\$489,826.07**

700 Property

762 Capitalized Equipment - Replacement

(400.00)

**Total Property**

**(\$400.00)**

**Total 2620 Operation of Buildings Services**

**\$57,047.10**

**\$59,047.10**

**\$659.76**

**\$1,857,880.50**

General Fund (10)

2660 Safety and Security Services

100 Personnel Services – Salaries

100 Personnel Services – Salaries

Elementary

Secondary

Federal

Total

25,221.92

**Total Personnel Services – Salaries**

**\$25,221.92**

200 Personnel Services – Employee Benefits

220 Social Security Contributions

230 PSERS Retirement Contributions

260 Workers' Compensation

1,929.49

8,648.59

143.75

**Total Personnel Services – Employee Benefits**

**\$10,721.83**

300 Purchased Professional and Technical Services

350 Security / Safety Services

72,324.44

**Total Purchased Professional and Technical Services**

**\$72,324.44**

**Total 2660 Safety and Security Services**

**\$108,268.19**

General Fund (10)

	<u>Elementary</u>	<u>Secondary</u>	<u>Federal</u>	<u>Total</u>
<b>2700 Student Transportation Services</b>				
<b>100 Personnel Services – Salaries</b>				
100 Personnel Services – Salaries				10,000.00
<b>Total Personnel Services – Salaries</b>				<b>\$10,000.00</b>
<b>200 Personnel Services – Employee Benefits</b>				
220 Social Security Contributions				733.19
230 PSERS Retirement Contributions				3,400.33
260 Workers' Compensation				57.00
<b>Total Personnel Services – Employee Benefits</b>				<b>\$4,190.52</b>
<b>300 Purchased Professional and Technical Services</b>				
340 Technical Services				7,695.00
<b>Total Purchased Professional and Technical Services</b>				<b>\$7,695.00</b>
<b>500 Other Purchased Services</b>				
513 Contracted Carriers				1,114,841.40
516 Student Transportation Services From the IU				7,240.08
<b>Total Other Purchased Services</b>				<b>\$1,122,081.48</b>
<b>Total 2700 Student Transportation Services</b>				<b>\$1,143,967.00</b>



General Fund (10)

2710 Supervision of Student Transportation Services

	<u>Elementary</u>	<u>Secondary</u>	<u>Federal</u>	<u>Total</u>
<b>100 Personnel Services – Salaries</b>				
100 Personnel Services – Salaries				10,000.00
<b>Total Personnel Services – Salaries</b>				<b>\$10,000.00</b>
<b>200 Personnel Services – Employee Benefits</b>				
220 Social Security Contributions				733.19
230 PSERS Retirement Contributions				3,400.33
260 Workers' Compensation				57.00
<b>Total Personnel Services – Employee Benefits</b>				<b>\$4,190.52</b>
<b>Total 2710 Supervision of Student Transportation Services</b>				<b>\$14,190.52</b>

General Fund (10)

2711 Supervision of Student Transportation Services – Head of Component

	<u>Elementary</u>	<u>Secondary</u>	<u>Federal</u>	<u>Total</u>
<b>100 Personnel Services – Salaries</b>				
100 Personnel Services – Salaries				10,000.00
<b>Total Personnel Services – Salaries</b>				<b>\$10,000.00</b>
<b>200 Personnel Services – Employee Benefits</b>				
220 Social Security Contributions				733.19
230 PERS Retirement Contributions				3,400.33
260 Workers' Compensation				57.00
<b>Total Personnel Services – Employee Benefits</b>				<b>\$4,190.52</b>
<b>Total 2711 Supervision of Student Transportation Services – Head of Component</b>				<b>\$14,190.52</b>

General Fund (10)

2720 Vehicle Operation Services

300 Purchased Professional and Technical Services

340 Technical Services

**Total Purchased Professional and Technical Services**

500 Other Purchased Services

513 Contracted Carriers

516 Student Transportation Services From the IU

**Total Other Purchased Services**

**Total 2720 Vehicle Operation Services**

Elementary

Secondary

Federal

Total

7,695.00

**\$7,695.00**

998,845.61

7,240.08

**\$1,006,085.69**

**\$1,013,780.69**

LEA : 127042853 Freedom Area SD

Printed 12/10/2020 12:53:12 PM

General Fund (10)

2750 Nonpublic Transportation

500 Other Purchased Services

513 Contracted Carriers

**Total Other Purchased Services**

**Total 2750 Nonpublic Transportation**

Elementary

Secondary

Federal

Total

115,995.79

**\$115,995.79**

**\$115,995.79**

General Fund (10)

2800 Support Services – Central

	<u>Elementary</u>	<u>Secondary</u>	<u>Federal</u>	<u>Total</u>
<b>100 Personnel Services – Salaries</b>				
100 Personnel Services – Salaries				127,507.64
<b>Total Personnel Services – Salaries</b>				<b>\$127,507.64</b>
<b>200 Personnel Services – Employee Benefits</b>				
210 Group Insurance – Contracted Provider				361.38
220 Social Security Contributions				9,333.32
230 PSERS Retirement Contributions				42,521.36
260 Workers' Compensation				729.15
270 Group Insurance – Self-Insurance				45,625.65
<b>Total Personnel Services – Employee Benefits</b>				<b>\$98,570.86</b>
<b>300 Purchased Professional and Technical Services</b>				
329 Professional Educational Services – Other				20,000.00
340 Technical Services				54,300.00
<b>Total Purchased Professional and Technical Services</b>				<b>\$74,300.00</b>
<b>400 Purchased Property Services</b>				
430 Repairs and Maintenance Services				(42.50)
440 Rentals				43,812.76
<b>Total Purchased Property Services</b>				<b>\$43,770.26</b>
<b>500 Other Purchased Services</b>				
580 Travel				4,493.40
<b>Total Other Purchased Services</b>				<b>\$4,493.40</b>
<b>600 Supplies</b>				
610 General Supplies				36,299.94
<b>Total Supplies</b>				<b>\$36,299.94</b>
<b>800 Other Objects</b>				
810 Dues and Fees				1,000.00
<b>Total Other Objects</b>				<b>\$1,000.00</b>
<b>Total 2800 Support Services – Central</b>				<b>\$385,942.10</b>

**General Fund (10)**

**2810 Planning, Research, Development and Evaluation Services**

	<u>Elementary</u>	<u>Secondary</u>	<u>Federal</u>	<u>Total</u>
<b>100 <u>Personnel Services – Salaries</u></b>				
100 Personnel Services – Salaries				127,507.64
<b>Total Personnel Services – Salaries</b>				<b>\$127,507.64</b>
<b>200 <u>Personnel Services – Employee Benefits</u></b>				
210 Group Insurance – Contracted Provider				361.38
220 Social Security Contributions				9,333.32
230 PSERS Retirement Contributions				42,521.36
260 Workers' Compensation				729.15
270 Group Insurance – Self-Insurance				45,625.65
<b>Total Personnel Services – Employee Benefits</b>				<b>\$98,570.86</b>
<b>300 <u>Purchased Professional and Technical Services</u></b>				
329 Professional Educational Services – Other				20,000.00
340 Technical Services				54,300.00
<b>Total Purchased Professional and Technical Services</b>				<b>\$74,300.00</b>
<b>400 <u>Purchased Property Services</u></b>				
430 Repairs and Maintenance Services				(42.50)
440 Rentals				43,812.76
<b>Total Purchased Property Services</b>				<b>\$43,770.26</b>
<b>500 <u>Other Purchased Services</u></b>				
580 Travel				1,500.00
<b>Total Other Purchased Services</b>				<b>\$1,500.00</b>
<b>600 <u>Supplies</u></b>				
610 General Supplies				36,299.94
<b>Total Supplies</b>				<b>\$36,299.94</b>
<b>800 <u>Other Objects</u></b>				
810 Dues and Fees				1,000.00
<b>Total Other Objects</b>				<b>\$1,000.00</b>
<b>Total 2810 Planning, Research, Development and Evaluation Services</b>				<b>\$382,948.70</b>

General Fund (10)

2830 Staff Services

500 Other Purchased Services

580 Travel

**Total Other Purchased Services**

**Total 2830 Staff Services**

Elementary

Secondary

Federal

Total

2,993.40

**\$2,993.40**

**\$2,993.40**

General Fund (10)

2834 Staff Development Services – Non-Instructional, Certified Staff Only

500 Other Purchased Services

580 Travel

**Total Other Purchased Services**

**Total 2834 Staff Development Services – Non-Instructional, Certified Staff Only**

Elementary

Secondary

Federal

Total

2,993.40

**\$2,993.40**

**\$2,993.40**



General Fund (10)

2900 Other Support Services

500 Other Purchased Services

595 IU Payments By Withholding

**Total Other Purchased Services**

**Total 2900 Other Support Services**

Elementary

Secondary

Federal

Total

12,027.75

**\$12,027.75**

**\$12,027.75**

General Fund (10)

2910 Support Services Not Listed Elsewhere In the 2000 Series

500 Other Purchased Services

595 IU Payments By Withholding

**Total Other Purchased Services**

**Total 2910 Support Services Not Listed Elsewhere In the 2000 Series**

Elementary

Secondary

Federal

Total

12,027.75

**\$12,027.75**

**\$12,027.75**

General Fund (10)

3000 Operation of Non-Instructional Services

Total

100 Personnel Services – Salaries

100 Personnel Services – Salaries

264,209.06

**Total Personnel Services – Salaries**

**\$264,209.06**

200 Personnel Services – Employee Benefits

220 Social Security Contributions

20,047.90

230 PSERS Retirement Contributions

54,625.60

260 Workers' Compensation

1,506.87

**Total Personnel Services – Employee Benefits**

**\$76,180.37**

300 Purchased Professional and Technical Services

329 Professional Educational Services – Other

1,500.00

330 Other Professional Services

22,000.00

340 Technical Services

20,170.00

350 Security / Safety Services

6,072.00

**Total Purchased Professional and Technical Services**

**\$49,742.00**

400 Purchased Property Services

430 Repairs and Maintenance Services

7,999.49

**Total Purchased Property Services**

**\$7,999.49**

500 Other Purchased Services

510 Student Transportation Services

40,502.82

520 Insurance – General

10,250.00

580 Travel

1,509.99

591 Services Purchased Locally

3,400.00

**Total Other Purchased Services**

**\$55,662.81**

600 Supplies

610 General Supplies

89,095.86

**Total Supplies**

**\$89,095.86**

800 Other Objects

810 Dues and Fees

17,753.40

860 Grants To Municipal and Community Service Organizations

1,500.00

890 Miscellaneous Expenditures

10,500.00

**Total Other Objects**

**\$29,753.40**

**Total 3000 Operation of Non-Instructional Services**

**\$572,642.99**

General Fund (10)

	<u>Elementary</u>	<u>Secondary</u>	<u>Federal</u>	<u>Total</u>
<b>3200 Student Activities</b>				
<b>100 Personnel Services – Salaries</b>				
100 Personnel Services – Salaries				263,059.06
<b>Total Personnel Services – Salaries</b>				<b>\$263,059.06</b>
<b>200 Personnel Services – Employee Benefits</b>				
220 Social Security Contributions				19,959.92
230 PSERS Retirement Contributions				54,625.60
260 Workers' Compensation				1,500.31
<b>Total Personnel Services – Employee Benefits</b>				<b>\$76,085.83</b>
<b>300 Purchased Professional and Technical Services</b>				
329 Professional Educational Services – Other				1,500.00
330 Other Professional Services				22,000.00
340 Technical Services				20,170.00
350 Security / Safety Services				6,072.00
<b>Total Purchased Professional and Technical Services</b>				<b>\$49,742.00</b>
<b>400 Purchased Property Services</b>				
430 Repairs and Maintenance Services				7,999.49
<b>Total Purchased Property Services</b>				<b>\$7,999.49</b>
<b>500 Other Purchased Services</b>				
510 Student Transportation Services				40,502.82
520 Insurance – General				10,250.00
580 Travel				1,509.99
591 Services Purchased Locally				3,400.00
<b>Total Other Purchased Services</b>				<b>\$55,662.81</b>
<b>600 Supplies</b>				
610 General Supplies				85,095.86
<b>Total Supplies</b>				<b>\$85,095.86</b>
<b>800 Other Objects</b>				
810 Dues and Fees				17,753.40
<b>Total Other Objects</b>				<b>\$17,753.40</b>
<b>Total 3200 Student Activities</b>				<b>\$555,398.45</b>

General Fund (10)

3300 Community Services

<u>Elementary</u>	<u>Secondary</u>	<u>Federal</u>	<u>Total</u>
-------------------	------------------	----------------	--------------

100 Personnel Services – Salaries

100 Personnel Services – Salaries			1,150.00
-----------------------------------	--	--	----------

<b>Total Personnel Services – Salaries</b>			<b>\$1,150.00</b>
--	--	--	-------------------

200 Personnel Services – Employee Benefits

220 Social Security Contributions			87.98
-----------------------------------	--	--	-------

260 Workers' Compensation			6.56
---------------------------	--	--	------

<b>Total Personnel Services – Employee Benefits</b>			<b>\$94.54</b>
---	--	--	----------------

600 Supplies

610 General Supplies		4,000.00	4,000.00
----------------------	--	----------	----------

<b>Total Supplies</b>		<b>\$4,000.00</b>	<b>\$4,000.00</b>
-----------------------	--	-------------------	-------------------

800 Other Objects

860 Grants To Municipal and Community Service Organizations			1,500.00
---	--	--	----------

<b>Total Other Objects</b>			<b>\$1,500.00</b>
----------------------------	--	--	-------------------

<b>Total 3300 Community Services</b>		<b>\$4,000.00</b>	<b>\$6,744.54</b>
--------------------------------------	--	-------------------	-------------------

General Fund (10)

3400 Scholarships and Awards

800 Other Objects

890 Miscellaneous Expenditures

**Total Other Objects**

**Total 3400 Scholarships and Awards**

Elementary

Secondary

Federal

Total

10,500.00

**\$10,500.00**

**\$10,500.00**

General Fund (10)

4000 Facilities Acquisition, Construction and Improvement Services

Total

400 Purchased Property Services

450 Construction Services

20,000.00

**Total Purchased Property Services**

**\$20,000.00**

600 Supplies

610 General Supplies

30,380.07

**Total Supplies**

**\$30,380.07**

700 Property

766 Capitalized Technology Equipment – Replacement

18,034.40

**Total Property**

**\$18,034.40**

**Total 4000 Facilities Acquisition, Construction and Improvement Services**

**\$68,414.47**

General Fund (10)

4200 Existing Site Improvement Services

Elementary

Secondary

Federal

Total

600 Supplies

610 General Supplies

6,689.68

**Total Supplies**

**\$6,689.68**

**Total 4200 Existing Site Improvement Services**

**\$6,689.68**



General Fund (10)

	<u>Elementary</u>	<u>Secondary</u>	<u>Federal</u>	<u>Total</u>
4600 Existing Building Improvement Services				
400 <u>Purchased Property Services</u>				
450 Construction Services				20,000.00
<b>Total Purchased Property Services</b>				<b>\$20,000.00</b>
600 <u>Supplies</u>				
610 General Supplies				23,690.39
<b>Total Supplies</b>				<b>\$23,690.39</b>
700 <u>Property</u>				
766 Capitalized Technology Equipment– Replacement				18,034.40
<b>Total Property</b>				<b>\$18,034.40</b>
<b>Total 4600 Existing Building Improvement Services</b>				<b>\$61,724.79</b>

General Fund (10)

5000 Other Expenditures and Financing Uses

Total

800 Other Objects

830 Interest

310,460.00

**Total Other Objects**

**\$310,460.00**

900 Other Uses of Funds

910 Redemption of Principal

420,000.00

939 Other Fund Transfers

500,000.00

990 Miscellaneous Other Uses of Funds

2,000.00

**Total Other Uses of Funds**

**\$922,000.00**

**Total 5000 Other Expenditures and Financing Uses**

**\$1,232,460.00**

General Fund (10)

5100 Debt Service / Other Expenditures and Financing Uses	<u>Elementary</u>	<u>Secondary</u>	<u>Federal</u>	<u>Total</u>
800 <u>Other Objects</u>				
830 Interest				310,460.00
<b>Total Other Objects</b>				<b>\$310,460.00</b>
900 <u>Other Uses of Funds</u>				
910 Redemption of Principal				420,000.00
990 Miscellaneous Other Uses of Funds				2,000.00
<b>Total Other Uses of Funds</b>				<b>\$422,000.00</b>
<b>Total 5100 Debt Service / Other Expenditures and Financing Uses</b>				<b>\$732,460.00</b>

General Fund (10)

	<u>Elementary</u>	<u>Secondary</u>	<u>Federal</u>	<u>Total</u>
5110 Debt Service				
800 <u>Other Objects</u>				
830 Interest				310,460.00
<b>Total Other Objects</b>				<b>\$310,460.00</b>
900 <u>Other Uses of Funds</u>				
910 Redemption of Principal				420,000.00
990 Miscellaneous Other Uses of Funds				2,000.00
<b>Total Other Uses of Funds</b>				<b>\$422,000.00</b>
<b>Total 5110 Debt Service</b>				<b>\$732,460.00</b>

General Fund (10)

5200 Interfund Transfers – Out

900 Other Uses of Funds

939 Other Fund Transfers

**Total Other Uses of Funds**

**Total 5200 Interfund Transfers – Out**

Elementary

Secondary

Federal

Total

500,000.00

**\$500,000.00**

**\$500,000.00**

General Fund (10)

5230 Capital Projects Fund Transfers

900 Other Uses of Funds

939 Other Fund Transfers

**Total Other Uses of Funds**

**Total 5230 Capital Projects Fund Transfers**

Elementary

Secondary

Federal

Total

500,000.00

**\$500,000.00**

**\$500,000.00**

LEA : 127042853 Freedom Area SD

Printed 12/10/2020 12:53:55 PM

Other Capital Projects Fund (39)

4000 Facilities Acquisition, Construction and Improvement Services

Total

400 Purchased Property Services

450 Construction Services

182,004.55

**Total Purchased Property Services**

**\$182,004.55**

**Total 4000 Facilities Acquisition, Construction and Improvement Services**

**\$182,004.55**

Other Capital Projects Fund (39)

4600 Existing Building Improvement Services

400 Purchased Property Services

450 Construction Services

**Total Purchased Property Services**

**Total 4600 Existing Building Improvement Services**

Elementary

Secondary

Federal

Total

182,004.55

**\$182,004.55**

**\$182,004.55**



	<u>General Fund(10)</u>	<u>Student Sponsored Activity Fund(21)</u>	<u>Public Purpose Trust(27)</u>	<u>Other Compt Approved (28)</u>	<u>Athletic / Activity(29)</u>
<b>1000 Instruction</b>					
1100 Regular Programs - Elementary / Secondary	10,240,168.25				
1200 Special Programs - Elementary / Secondary	3,599,772.87				
1300 Vocational Education	387,374.93				
1400 Other Instructional Programs - Elementary / Secondary	398.83				
1500 Nonpublic School Programs	6,717.22				
<b>Total Instruction</b>	<b>\$14,234,432.10</b>				
<b>2000 Support Services</b>					
2100 Support Services - Students	958,281.03				
2200 Support Services - Instructional Staff	249,131.96				
2300 Support Services - Administration	1,327,757.42				
2400 Support Services - Pupil Health	194,532.61				
2500 Support Services - Business	378,796.38				
2600 Operation and Maintenance of Plant Services	2,100,326.38				
2700 Student Transportation Services	1,143,967.00				
2800 Support Services - Central	385,942.10				
2900 Other Support Services	12,027.75				
<b>Total Support Services</b>	<b>\$6,750,762.63</b>				
<b>3000 Operation of Non-Instructional Services</b>					
3200 Student Activities	555,398.45				
3300 Community Services	6,744.54				
3400 Scholarships and Awards	10,500.00				
<b>Total Operation of Non-Instructional Services</b>	<b>\$572,642.99</b>				
<b>4000 Facilities Acquisition, Construction and Improvement Services</b>					
4200 Existing Site Improvement Services	6,689.68				
4600 Existing Building Improvement Services	61,724.79				
<b>Total Facilities Acquisition, Construction and Improvement Services</b>	<b>\$68,414.47</b>				
<b>5000 Other Expenditures and Financing Uses</b>					
5100 Debt Service / Other Expenditures and Financing Uses	732,460.00				
5200 Interfund Transfers - Out	500,000.00				
<b>Total Other Expenditures and Financing Uses</b>	<b>\$1,232,460.00</b>				
<b>TOTAL ACTUAL EXPENDITURES &amp; OTHER FINANCING USES</b>	<b>\$22,858,712.19</b>				

	<u>Capital Reserve (690, 1850)(31)</u>	<u>Capital Reserve (1431)(32)</u>	<u>Other Capital Projects Fund(39)</u>	<u>Debt Service(40)</u>	<u>Permanent(90)</u>
<b>1000 Instruction</b>					
1100 Regular Programs - Elementary / Secondary					
1200 Special Programs - Elementary / Secondary					
1300 Vocational Education					
1400 Other Instructional Programs - Elementary / Secondary					
1500 Nonpublic School Programs					
<b>Total Instruction</b>					
<b>2000 Support Services</b>					
2100 Support Services - Students					
2200 Support Services - Instructional Staff					
2300 Support Services - Administration					
2400 Support Services - Pupil Health					
2500 Support Services - Business					
2600 Operation and Maintenance of Plant Services					
2700 Student Transportation Services					
2800 Support Services - Central					
2900 Other Support Services					
<b>Total Support Services</b>					
<b>3000 Operation of Non-Instructional Services</b>					
3200 Student Activities					
3300 Community Services					
3400 Scholarships and Awards					
<b>Total Operation of Non-Instructional Services</b>					
<b>4000 Facilities Acquisition, Construction and Improvement Services</b>					
4200 Existing Site Improvement Services					
4600 Existing Building Improvement Services			182,004.55		
<b>Total Facilities Acquisition, Construction and Improvement Services</b>			<b>\$182,004.55</b>		
<b>5000 Other Expenditures and Financing Uses</b>					
5100 Debt Service / Other Expenditures and Financing Uses					
5200 Interfund Transfers - Out					
<b>Total Other Expenditures and Financing Uses</b>					
<b>TOTAL ACTUAL EXPENDITURES &amp; OTHER FINANCING USES</b>			<b>\$182,004.55</b>		

	<u>Total</u>
<b>1000 Instruction</b>	
1100 Regular Programs - Elementary / Secondary	10,240,168.25
1200 Special Programs - Elementary / Secondary	3,599,772.87
1300 Vocational Education	387,374.93
1400 Other Instructional Programs - Elementary / Secondary	398.83
1500 Nonpublic School Programs	6,717.22
<b>Total Instruction</b>	<b>\$14,234,432.10</b>
<b>2000 Support Services</b>	
2100 Support Services - Students	958,281.03
2200 Support Services - Instructional Staff	249,131.96
2300 Support Services - Administration	1,327,757.42
2400 Support Services - Pupil Health	194,532.61
2500 Support Services - Business	378,796.38
2600 Operation and Maintenance of Plant Services	2,100,326.38
2700 Student Transportation Services	1,143,967.00
2800 Support Services - Central	385,942.10
2900 Other Support Services	12,027.75
<b>Total Support Services</b>	<b>\$6,750,762.63</b>
<b>3000 Operation of Non-Instructional Services</b>	
3200 Student Activities	555,398.45
3300 Community Services	6,744.54
3400 Scholarships and Awards	10,500.00
<b>Total Operation of Non-Instructional Services</b>	<b>\$572,642.99</b>
<b>4000 Facilities Acquisition, Construction and Improvement Services</b>	
4200 Existing Site Improvement Services	6,689.68
4600 Existing Building Improvement Services	243,729.34
<b>Total Facilities Acquisition, Construction and Improvement Services</b>	<b>\$250,419.02</b>
<b>5000 Other Expenditures and Financing Uses</b>	
5100 Debt Service / Other Expenditures and Financing Uses	732,460.00
5200 Interfund Transfers - Out	500,000.00
<b>Total Other Expenditures and Financing Uses</b>	<b>\$1,232,460.00</b>
<b>TOTAL ACTUAL EXPENDITURES &amp; OTHER FINANCING USES</b>	<b>\$23,040,716.74</b>

**PSERS Salary Data (Salary Data should relate to the General Fund only)**

<b>Amount Description</b>	<b>Amount</b>
Total Salary Base for salaries subject to PSERS withholding	9,179,358.08
Total Federally Funded salaries subject to PSERS withholding	380,966.04
	<hr/>

**Title I Expenditure Data**

<b>Amount Description</b>	<b>Amount</b>
Expenditures Funded with Current Title I Funds	303,926.00
Expenditures Funded with Carry over Title I Funds	
<b>Total Title I Expenditure Data</b>	<hr/> <b>\$303,926.00</b> <hr/>

		Benefits for Staff Relative to Collective Bargaining Agreements		
	OBJECT	COVERED	NOT COVERED	TOTAL
10 General Fund	211 Medical Insurance			
	212 Dental Insurance			
	215 Eye Care Insurance			
	216 Prescription Insurance			
	271 Self-Insurance Medical Benefits	1,852,639.60	409,548.00	2,262,187.60
	272 Self-Insurance Dental Benefits	78,444.00	13,641.30	92,085.30
	275 Self-Insurance Eye Care Benefits		325.44	325.44
	276 Self-Insurance Prescription Benefits			
	<b>FUND TOTAL</b>	<b>\$1,931,083.60</b>	<b>\$423,514.74</b>	<b>\$2,354,598.34</b>
50 Enterprise Fund	211 Medical Insurance			
	212 Dental Insurance			
	215 Eye Care Insurance			
	216 Prescription Insurance			
	271 Self-Insurance Medical Benefits	35,916.00	11,506.40	47,422.40
	272 Self-Insurance Dental Benefits	1,536.00	254.70	1,790.70
	275 Self-Insurance Eye Care Benefits			
	276 Self-Insurance Prescription Benefits			
	<b>FUND TOTAL</b>	<b>\$37,452.00</b>	<b>\$11,761.10</b>	<b>\$49,213.10</b>
60 Internal Service Fund	No Self Insurance data to report			
	211 Medical Insurance			
	212 Dental Insurance			
	215 Eye Care Insurance			
	216 Prescription Insurance			
	271 Self-Insurance Medical Benefits			
	272 Self-Insurance Dental Benefits			
	275 Self-Insurance Eye Care Benefits			
	276 Self-Insurance Prescription Benefits			
	<b>FUND TOTAL</b>			
<b>Total of All Funds</b>		<b>\$1,968,535.60</b>	<b>\$435,275.84</b>	<b>\$2,403,811.44</b>

Function	Special Education (Prior Year)	Nonspecial Education (Prior Year)	Total (Prior Year)	Special Education (Current Year)	Nonspecial Education (Current Year)	Total (Current Year)
2120 Guidance Services	117,697.70	409,621.75	527,319.45	130,829.65	453,231.31	584,060.96
2140 Psychological Services	183,061.35		183,061.35	204,447.51		204,447.51
2150 Speech Pathology and Audiology Services						
2160 Social Work Services	54,280.00		54,280.00	54,280.00		54,280.00
2260 Instruction and Curriculum Development Services	137,153.44		137,153.44	33.61		33.61
2350 Legal and Accounting Services	17,863.58	24,008.62	41,872.20	10,965.32	14,203.26	25,168.58
2420 Medical Services						
2440 Nursing Services	36,586.55	127,331.70	163,918.25	42,348.84	150,145.90	192,494.74
2700 Student Transportation Services	533,044.17	656,127.63	1,189,171.80	486,920.67	649,806.25	1,136,726.92
<b>Total</b>	<b>\$1,079,686.79</b>	<b>\$1,217,089.70</b>	<b>\$2,296,776.49</b>	<b>\$929,825.60</b>	<b>\$1,267,386.72</b>	<b>\$2,197,212.32</b>

(PRINCIPAL AMOUNTS ONLY)

**GOVERNMENTAL FUNDS/ ACTIVITIES**

	Short-Term Borrowing	General Obligation Bonds/Notes	Authority Building Obligations	Other Long-Term Debt	Other Post- Employment Benefits (OPEB)	Compensated Absences	Net Pension Liability	Total
1. Debt at Beginning of Fiscal Year		10,980,000.00			5,141,353.00	131,196.00	32,407,125.00	48,659,674.00
2. Additional Debt Incurred During Year					128,638.00			128,638.00
3. Retirements and Repayments		420,000.00				13,049.00	1,330,308.00	1,763,357.00
4. Debt at End of Fiscal Year		10,560,000.00			5,269,991.00	118,147.00	31,076,817.00	47,024,955.00
5. Accreted Interest at End Of Fiscal Year								
6. Total Debt and Accreted Interest		10,560,000.00			5,269,991.00	118,147.00	31,076,817.00	47,024,955.00
7. Current Portion P&I - Due within 1 year		727,546.00				29,537.00		757,083.00
8. Interest Paid during current fiscal year		310,560.00						310,560.00

(PRINCIPAL AMOUNTS ONLY)

**PROPRIETARY FUNDS**

	Short-Term Borrowing	General Obligation Bonds/Notes	Authority Building Obligations	Other Long-Term Debt	Other Post- Employment Benefits (OPEB)	Compensated Absences	Net Pension Liability	Total
1. Debt at Beginning of Fiscal Year					41,514.00		955,875.00	997,389.00
2. Additional Debt Incurred During Year					419.00			419.00
3. Retirements and Repayments							33,692.00	33,692.00
4. Debt at End of Fiscal Year					41,933.00		922,183.00	964,116.00
5. Accreted Interest at End Of Fiscal Year								
6. Total Debt and Accreted Interest					41,933.00		922,183.00	964,116.00
7. Current Portion P&I - Due within 1 year								
8. Interest Paid during current fiscal year								

**Total Principal and Interest Payments Made by Your School - All Funds**

Function	Fund		Principal (910)	Principal (920)	Interest (830)	Total (Principal +Interest)	Misc Other Uses (990)
5110	10	General Fund	420,000.00		310,460.00	730,460.00	2,000.00
5110	20	Special Revenue Funds					
5110	30	Capital Projects Funds					
5110	40	Debt Service Fund					
5110	90	Permanent Fund					
5120	10	General Fund					
5120	20	Special Revenue Funds					
5120	30	Capital Projects Funds					
5120	40	Debt Service Fund					
<b>Total Debt Payments - Governmental Funds</b>			<b>\$420,000.00</b>		<b>\$310,460.00</b>	<b>\$730,460.00</b>	<b>\$2,000.00</b>

Function	Fund		Principal (910)	Principal (920)	Interest (830)	Total (Principal +Interest)
5110	50	Enterprise Fund				
5110	60	Internal Service Fund				
5120	50	Enterprise Fund				
5120	60	Internal Service Fund				
<b>Total Debt Payments - Proprietary Funds</b>						



**Debt Details**  
**Governmental Funds/ Activities**

Debt Category	Debt Issue Date (MM/YYYY)	Debt at Beginning of Fiscal Year	Principal Amounts Only			Current Portion Due Within One Year (Principal and Interest)	Interest Paid During Fiscal Year
			Additions	Reductions / Repayments	Debt at End of Fiscal Year		
General Obligation Bonds/Notes – CIB	08/2017	9,895,000.00		65,000.00	9,830,000.00	350,196.00	286,010.00
General Obligation Bonds/Notes – CIB	02/2014	1,085,000.00		355,000.00	730,000.00	377,350.00	24,550.00
Compensated Absences		131,196.00		13,049.00	118,147.00	29,537.00	
Other Post-Employment Benefits (OPEB)		5,141,353.00	128,638.00		5,269,991.00		
Net Pension Liability		32,407,125.00		1,330,308.00	31,076,817.00		
<b>Totals for Debt Entered:</b>		<b>\$48,659,674.00</b>	<b>\$128,638.00</b>	<b>\$1,763,357.00</b>	<b>\$47,024,955.00</b>	<b>\$757,083.00</b>	<b>\$310,560.00</b>

**Bond Details**  
**Proprietary Funds**

Debt Category	Debt Issue Date (MM/YYYY)	Debt at Beginning of Fiscal Year	Principal Amounts Only			Current Portion Due Within One Year (Principal and Interest)	Interest Paid During Fiscal Year
			Additions	Reductions / Repayments	Debt at End of Fiscal Year		
Other Post-Employment Benefits (OPEB)		41,514.00	419.00		41,933.00		
Net Pension Liability		955,875.00		33,692.00	922,183.00		
<b>Totals for Debt Entered:</b>		<b>\$997,389.00</b>	<b>\$419.00</b>	<b>\$33,692.00</b>	<b>\$964,116.00</b>		

**General Fund (10)**

**Section 1: Tuition/Purchased Services as Reported within Expenditure Detail**

	Amount
Tuition Reported in General Fund Expenditures 1000-560	2,025,960.22
Purchased Services in General Fund Expenditures 1000-594 and 1000-597	
<b>Section 1 Total</b>	<b>\$2,025,960.22</b>

**Section 2: Tuition Paid to Institution Types During Fiscal Year**

	Tuition Paid For Nonspecial Education	Tuition Paid For Special Education	Total
1 1306 Institutions			
2 Institutionalized Children's Programs			
3 Juveniles Incarcerated in Adult Facilities			
4 Residential Treatment Facilities			
5 Other Local Education Agencies		373,381.27	373,381.27
6 Brick and Mortar Charter Schools	297,013.26	210,135.81	507,149.07
7 Cyber Charter Schools	257,800.40	286,956.98	544,757.38
8 Career and Technology Centers	247,665.94	139,708.99	387,374.93
9 Approved Private Schools		207,315.66	207,315.66
10 PA Chartered Schools for the Deaf and Blind		3,253.00	3,253.00
11 Private Residential Rehabilitative Institutions		2,728.91	2,728.91
12 Juvenile Detention Centers			
13 Special Program Jointures			
14 Other Tuition Not Included Elsewhere In This Section			
<b>Section 2 Total</b>	<b>\$802,479.60</b>	<b>\$1,223,480.62</b>	<b>\$2,025,960.22</b>

Food Service / Cafeteria Operations Fund (51)

3000 Operation of Non-Instructional Services

	<u>Total</u>
<b>100 Personnel Services – Salaries</b>	
100 Personnel Services – Salaries	274,057.84
<b>Total Personnel Services – Salaries</b>	<b>\$274,057.84</b>
<b>200 Personnel Services – Employee Benefits</b>	
210 Group Insurance – Contracted Provider	312.80
220 Social Security Contributions	21,883.01
230 PSERS Retirement Contributions	106,100.76
260 Workers' Compensation	1,554.18
270 Group Insurance – Self-Insurance	49,213.10
292 Health Savings Accounts	4,935.00
<b>Total Personnel Services – Employee Benefits</b>	<b>\$183,998.85</b>
<b>300 Purchased Professional and Technical Services</b>	
329 Professional Educational Services – Other	(195.42)
<b>Total Purchased Professional and Technical Services</b>	<b>(\$195.42)</b>
<b>400 Purchased Property Services</b>	
430 Repairs and Maintenance Services	10,526.24
490 Other Purchased Property Services	2,080.00
<b>Total Purchased Property Services</b>	<b>\$12,606.24</b>
<b>500 Other Purchased Services</b>	
580 Travel	1,291.14
<b>Total Other Purchased Services</b>	<b>\$1,291.14</b>
<b>600 Supplies</b>	
610 General Supplies	25,524.05
630 Food	296,828.28
<b>Total Supplies</b>	<b>\$322,352.33</b>
<b>700 Property</b>	
740 Depreciation	36,390.25
<b>Total Property</b>	<b>\$36,390.25</b>
<b>800 Other Objects</b>	
810 Dues and Fees	219.36
<b>Total Other Objects</b>	<b>\$219.36</b>
<b>Total 3000 Operation of Non-Instructional Services</b>	<b>\$830,720.59</b>

Food Service / Cafeteria Operations Fund (51)

	<u>Elementary</u>	<u>Secondary</u>	<u>Federal</u>	<u>Total</u>
<b>3100 Food Services</b>				
<b>100 Personnel Services – Salaries</b>				
100 Personnel Services – Salaries				274,057.84
<b>Total Personnel Services – Salaries</b>				<b>\$274,057.84</b>
<b>200 Personnel Services – Employee Benefits</b>				
210 Group Insurance – Contracted Provider				312.80
220 Social Security Contributions				21,883.01
230 PSERS Retirement Contributions				106,100.76
260 Workers' Compensation				1,554.18
270 Group Insurance – Self-Insurance				49,213.10
292 Health Savings Accounts				4,935.00
<b>Total Personnel Services – Employee Benefits</b>				<b>\$183,998.85</b>
<b>300 Purchased Professional and Technical Services</b>				
329 Professional Educational Services – Other				(195.42)
<b>Total Purchased Professional and Technical Services</b>				<b>(\$195.42)</b>
<b>400 Purchased Property Services</b>				
430 Repairs and Maintenance Services				10,526.24
490 Other Purchased Property Services				2,080.00
<b>Total Purchased Property Services</b>				<b>\$12,606.24</b>
<b>500 Other Purchased Services</b>				
580 Travel				1,291.14
<b>Total Other Purchased Services</b>				<b>\$1,291.14</b>
<b>600 Supplies</b>				
610 General Supplies				25,524.05
630 Food				296,828.28
<b>Total Supplies</b>				<b>\$322,352.33</b>
<b>700 Property</b>				
740 Depreciation				36,390.25
<b>Total Property</b>				<b>\$36,390.25</b>
<b>800 Other Objects</b>				
810 Dues and Fees				219.36
<b>Total Other Objects</b>				<b>\$219.36</b>
<b>Total 3100 Food Services</b>				<b>\$830,720.59</b>

	<u>Food Service(51)</u>	<u>Child Care Operations(52)</u>	<u>Other Enterprise(58)</u>	<u>Internal Service(60)</u>	<u>Total</u>
<b>3000 <u>Operation of Non-Instructional Services</u></b>					
3100 Food Services		830,720.59			830,720.59
<b>Total Operation of Non-Instructional Services</b>		<b>\$830,720.59</b>			<b>\$830,720.59</b>
<b>TOTAL ACTUAL EXPENDITURES &amp; OTHER FINANCING USES</b>		<b>\$830,720.59</b>			<b>\$830,720.59</b>

LEA : 127042853 Freedom Area SD

Printed 12/10/2020 12:55:57 PM

Fund	School	School Number	Local Personnel	Local Nonpersonnel	State Personnel	State Nonpersonnel	Federal Personnel	Federal Nonpersonnel	Total Explanation
10									
	Freedom Area El Sch	8357	3,617,208.39	563,761.94	4,982,743.87	776,588.20	442,464.39	57,030.56	10,439,797.35
	Freedom Area MS	8356	1,327,998.61	426,807.19	1,829,332.52	587,931.53	3,415.10	(23,459.40)	4,152,025.55
	Freedom Area SHS	6563	1,382,603.10	444,356.59	1,904,550.81	612,106.03	3,555.53	(24,424.00)	4,322,748.06
<b>Total</b>			<b>6,327,810.10</b>	<b>1,434,925.72</b>	<b>8,716,627.20</b>	<b>1,976,625.76</b>	<b>449,435.02</b>	<b>9,147.16</b>	<b>18,914,570.96</b>